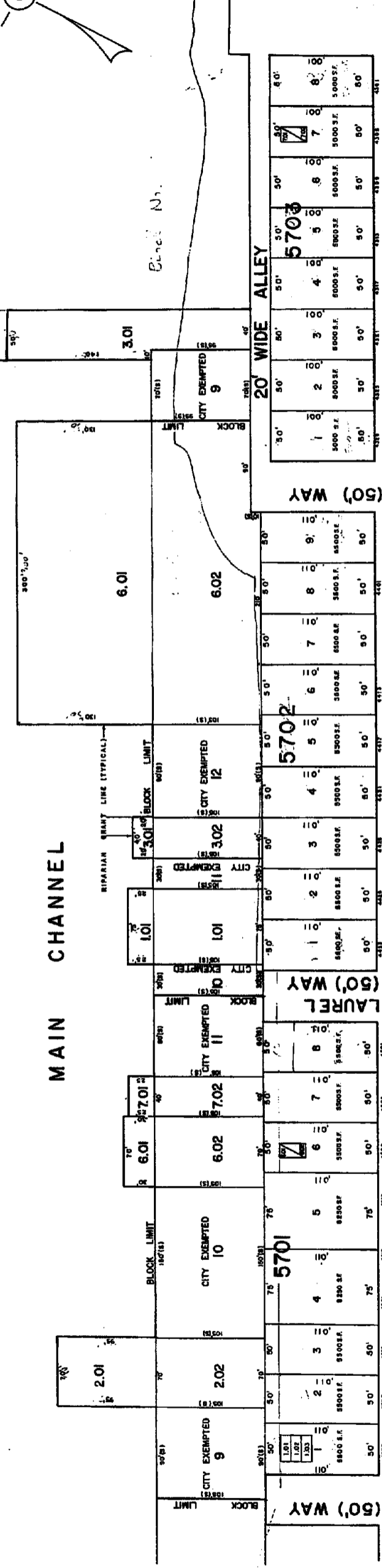


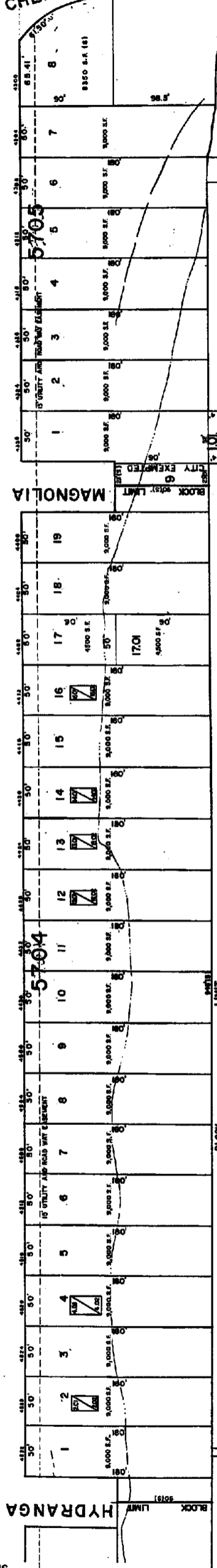
KEY SHEET 1

# MAIN CHANNEL



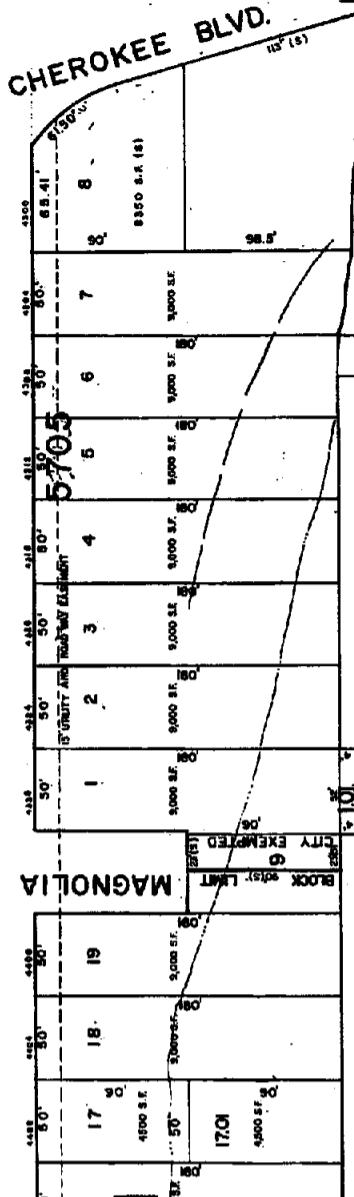
SHEET 56

# ATLANTIC - BRIGANTINE (100')



SHEET 34

# BOULEVARD



# ST. GEORGE'S THOROFARE

REV. 4-SEPT-85, 1993  
REV. APR. 13, 1991

NEW A-100 ZONING MAP OF THE TOWNSHIP OF BRIGANTINE, NEW JERSEY, AS AMENDED BY LOCAL ORDINANCES AND RESOLUTIONS, IS HEREBY APPROVED AS A ZONING MAP IN ACCORDANCE WITH THE PROVISIONS OF CHAPTER 173, LAWS OF 1982, AND THE PROVISIONS OF CHAPTER 173, LAWS OF 1983, BY THE DIRECTOR, DIVISION OF PLANNING.

*William C. Kissane*  
WILLIAM C. KISSANE, P.E.  
PLANNING ENGINEER  
100 WEST CHESTNUT ST., PLEASANTVILLE, N.J.  
DATE: APR 21 1985 SERIAL NO. 556

403

## TAX MAP

CITY OF BRIGANTINE  
ATLANTIC COUNTY, NEW JERSEY  
JAN. 1986

WILLIAM C. KISSANE, P.E.  
PLANNING ENGINEER  
100 WEST CHESTNUT ST., PLEASANTVILLE, N.J.  
DATE: APR 21 1985 SERIAL NO. 556

KEY SHEET 1