

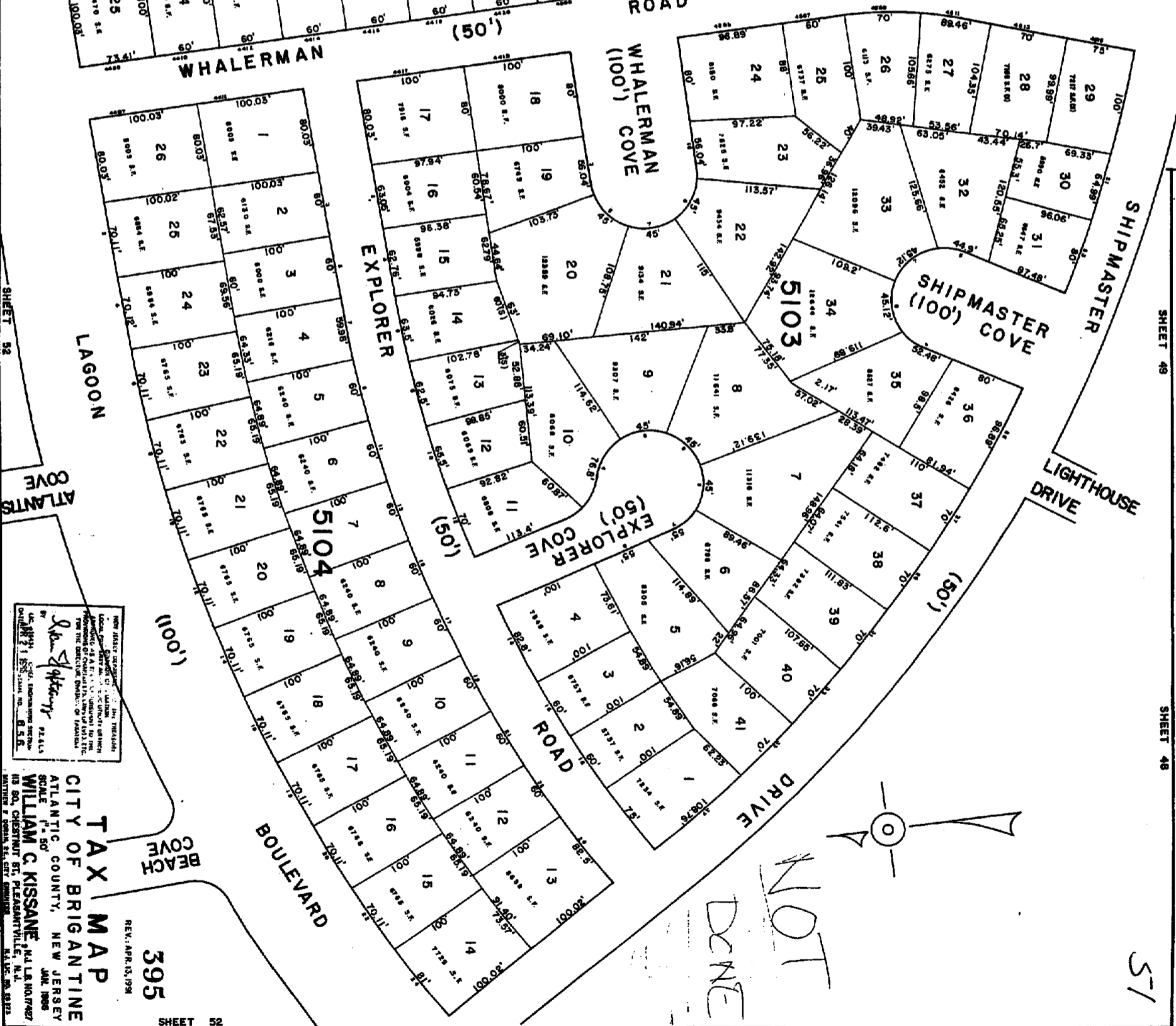
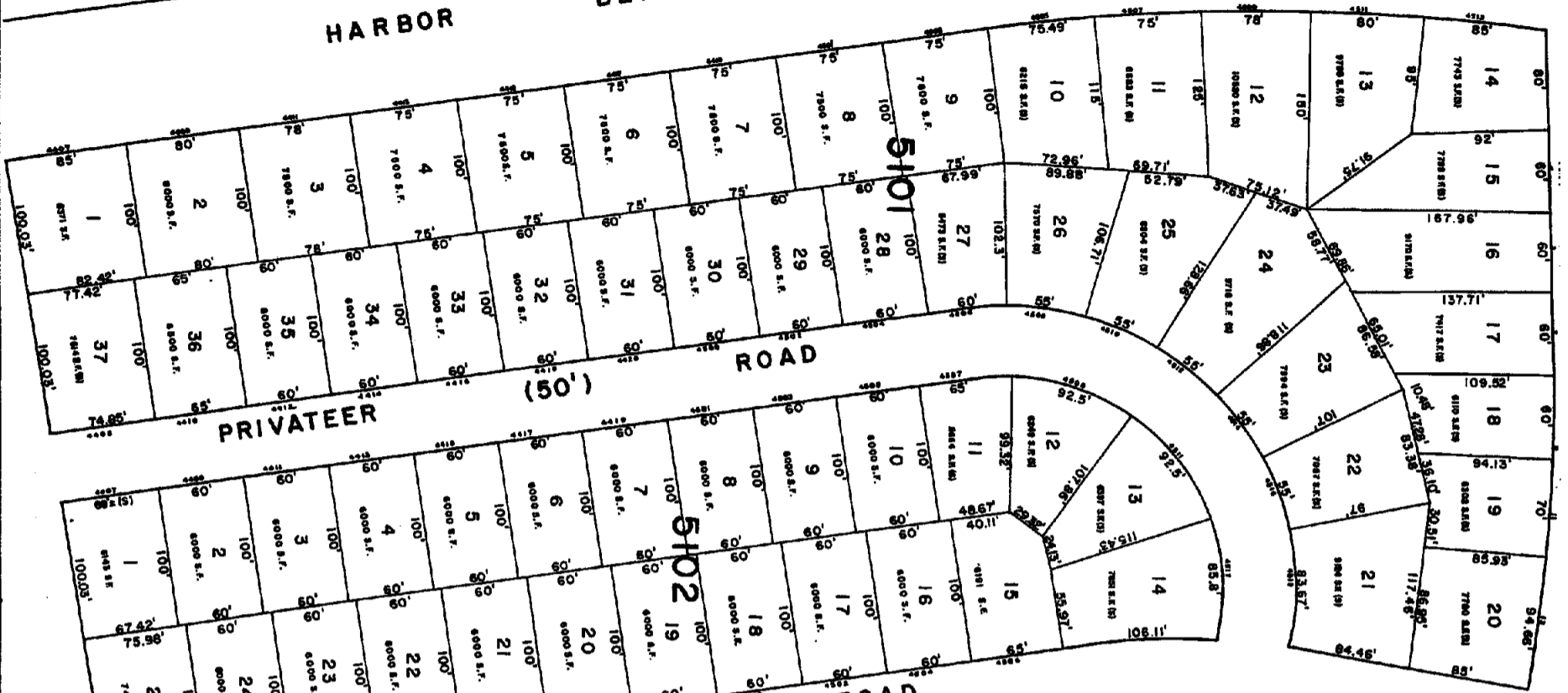
45th ST SOUTH

BOULEVARD

HARBOR

BEACH (100')

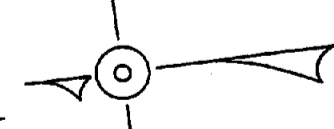
(100')



THIS MAP IS A REPRODUCTION OF THE ORIGINAL MAP AS FILED IN THE OFFICE OF THE CLERK OF SUPERIOR COURT, COUNTY OF ATLANTIC, NEW JERSEY, ON APRIL 15, 1998. THE ORIGINAL MAP WAS PREPARED BY WILLIAM C. KISSANE, P.L.L.C., AND IS HEREBY REPRODUCED BY THE CITY OF BRIGANTINE, NEW JERSEY.

**TAX MAP**  
 CITY OF BRIGANTINE  
 ATLANTIC COUNTY, NEW JERSEY  
 SCALE: 1" = 50'  
 WILLIAM C. KISSANE, P.L.L.C.  
 115 SO. CHESTNUT ST., PLEASANTVILLE, N.J. 07058  
 REV. APR. 15, 1998

395



NOT DONE

51