

TWENTY EIGHTH

AVENUE

BOULEVARD

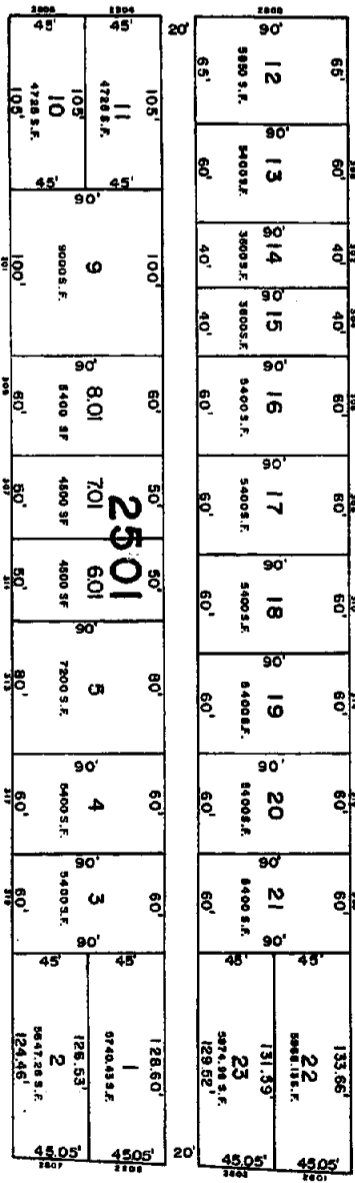
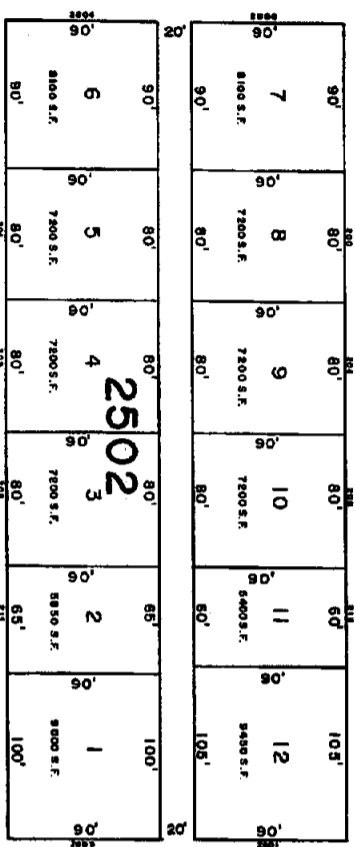
TWENTY NINTH

(60')

STREET

SOUTH

AVENUE

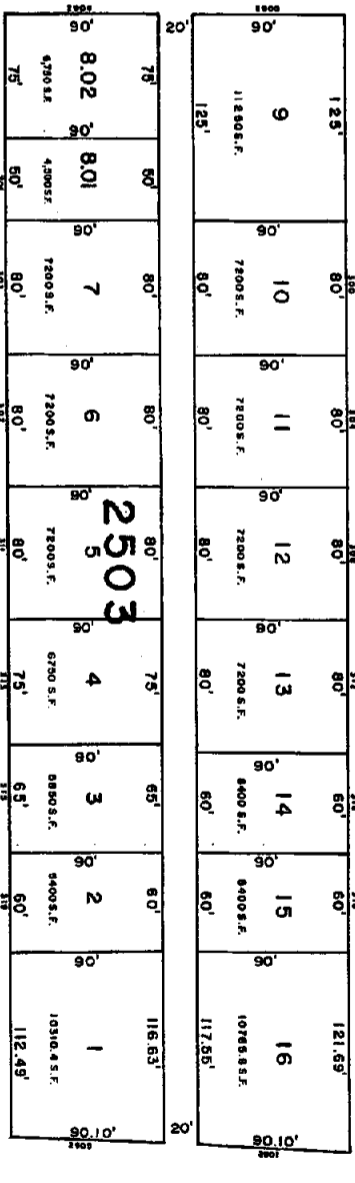
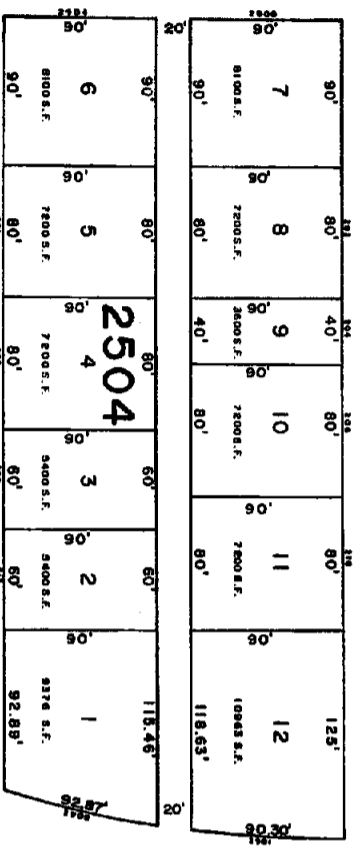


(60')

(100')

(60')

(80')



THIRTIETH

STREET

SOUTH

OCEAN

REVERE

BRIGANTINE

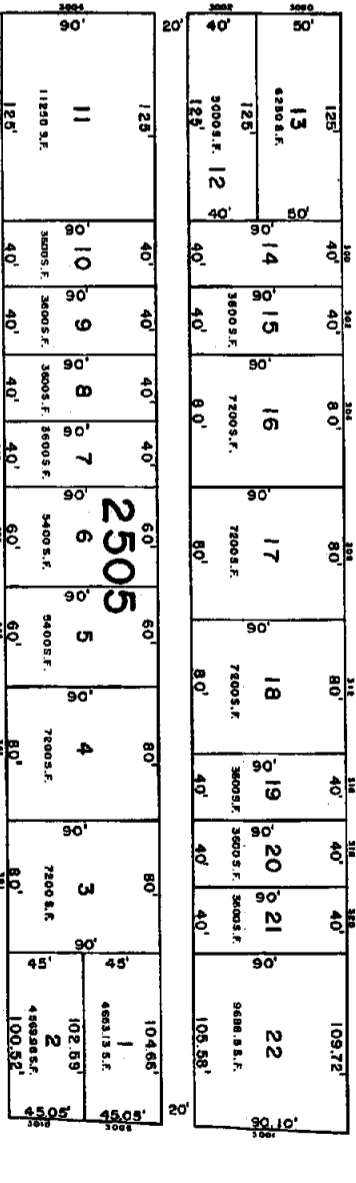
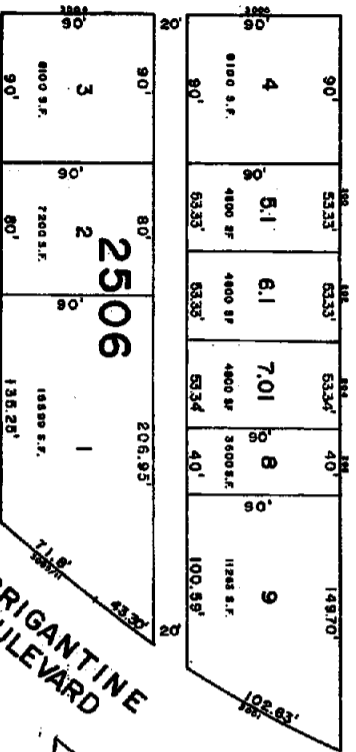
THIRTY

FIRST

(60')

STREET

SOUTH



369

NEW JERSEY DEPARTMENT OF THE TREASURY
 LOCAL DIVISION OF LAND TAXATION
 APPROVED AS A TAX MAP PURSUANT TO THE
 PROVISIONS OF CHAPTER 123, LAWS OF 1976
 FOR THE COUNTY OF BRIGANTINE

TAX MAP
 CITY OF BRIGANTINE
 ATLANTIC COUNTY, NEW JERSEY
 SCALE 1" = 50'
 WILLIAM C. KISSANE, N.J.L.S. NO. 17427
 103 SO. CHESTNUT ST., PLEASANTVILLE, N.J.
 MATTHEW J. DONOHUE, P.E., CITY ENGINEER

REV: SEPT. 23, 1993
 REV: JAN. 16, 1990

25