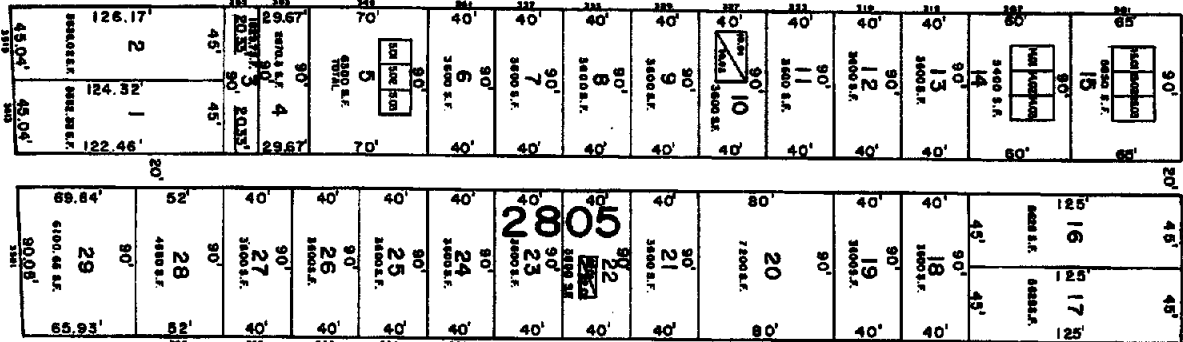
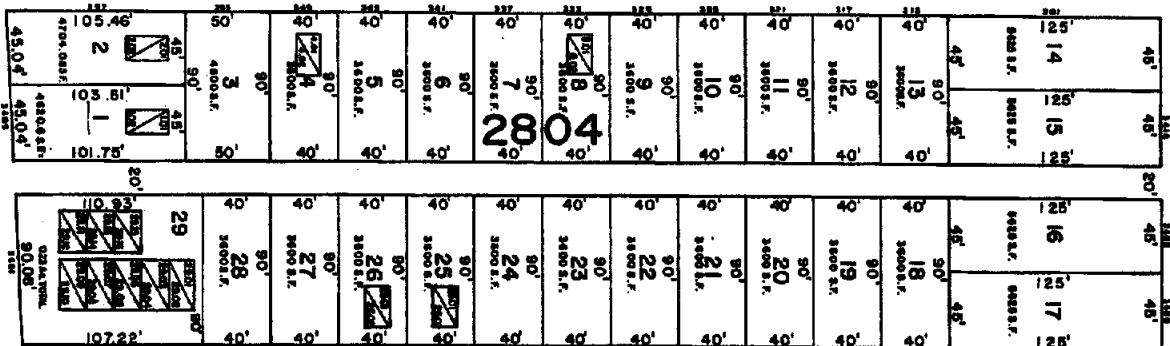


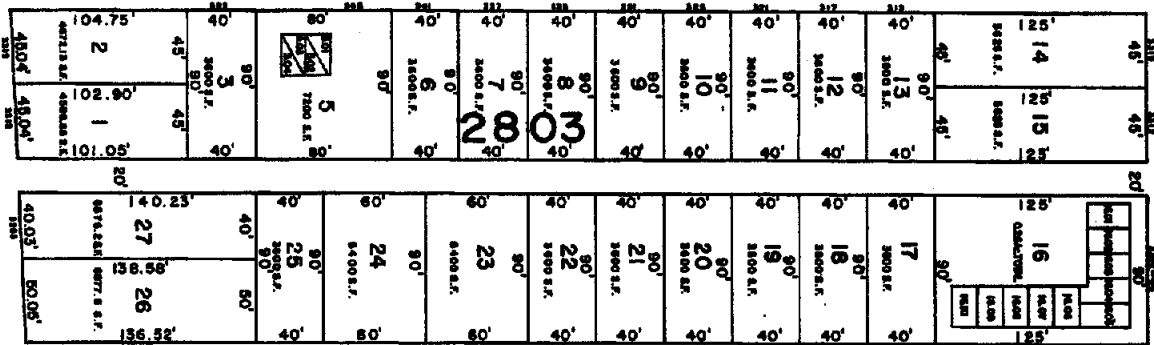
THIRTY SIXTH (50') STREET SOUTH



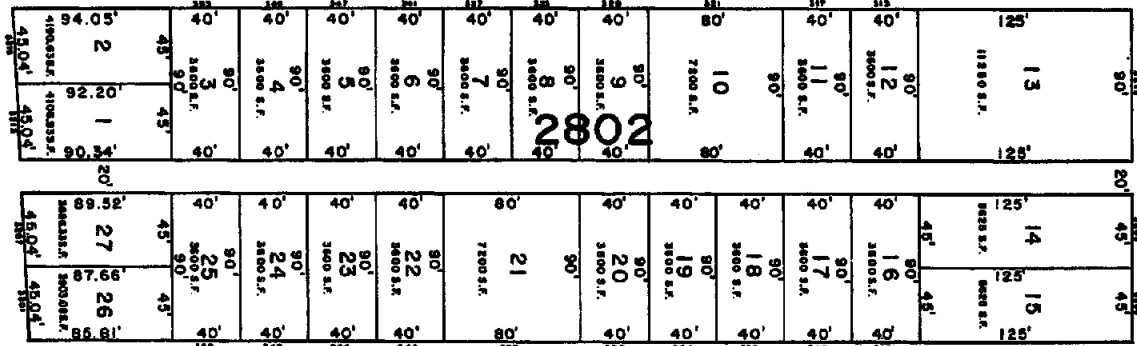
THIRTY FIFTH (60') STREET SOUTH



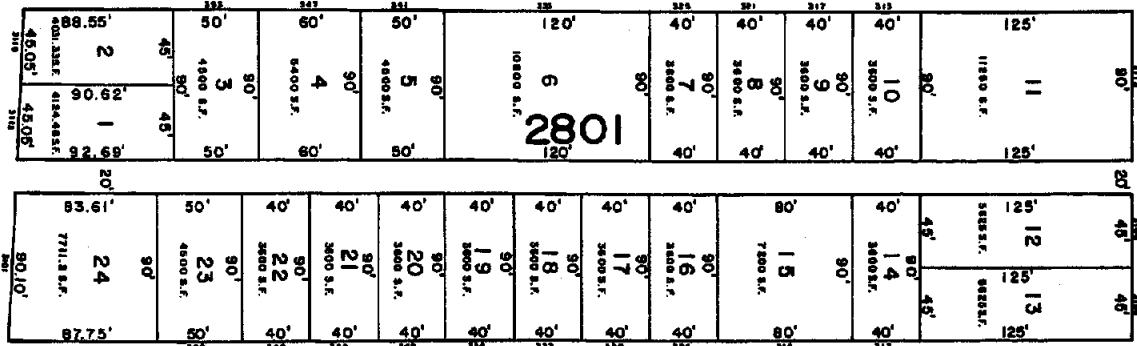
THIRTY FOURTH (60') STREET SOUTH



THIRTY THIRD (60') STREET SOUTH



THIRTY SECOND (60') STREET SOUTH



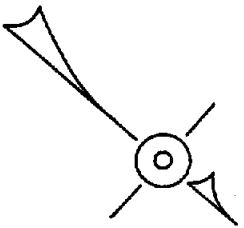
THIRTY FIRST (60') STREET SOUTH



OCEAN

(80')

AVENUE



BRIGHTLINE

(100')

AVENUE

SHEET 31

SHEET 29

28

372

SHEET 33

NEW JERSEY DEPARTMENT OF TREASURY
 LOCAL PROPERTY AND PUBLIC UTILITY TAX
 AFFIDAVIT AS A TAX MAP PRELIMINARY TO THE
 RECORDATION OF THE TAX MAP IN THE OFFICE
 OF THE DEPARTMENT OF TREASURY
 FOR THE DISTRICT OF BRIGANTINE

TAX MAP
 CITY OF BRIGANTINE
 ATLANTIC COUNTY, NEW JERSEY
 SCALE 1" = 50'
 WILLIAM C. KISSANE, N.J. L.S. NO. 17427
 105 SO. CHESTNUT ST., PLEASANTVILLE, N.J.
 DATE: APRIL 19, 1989

REV. 08/23/1983
REV. JAN. 10, 1980