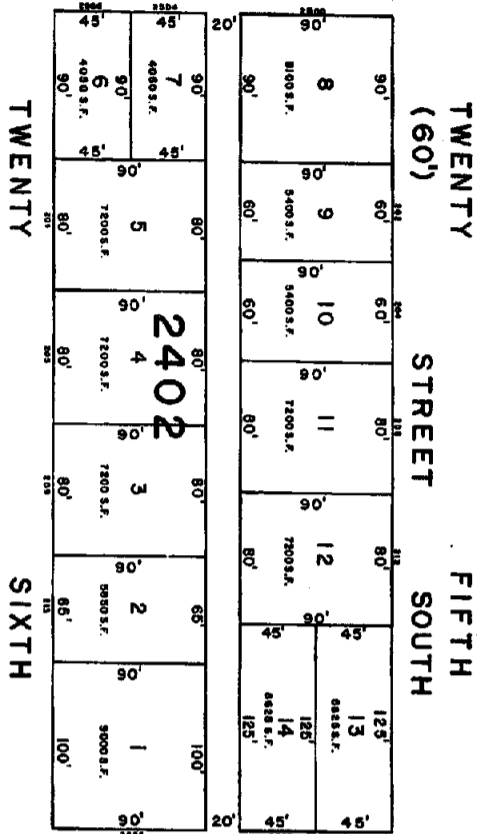


BOULEVARD



TWENTY

STREET

SOUTH

(60')

TWENTY STREET SOUTH

CITY OF BRIGANTINE EXEMPTED

25th STREET (60') SOUTH

118.78' TOTAL

368 24

AVENUE

460' TOTAL

MATCH LINE

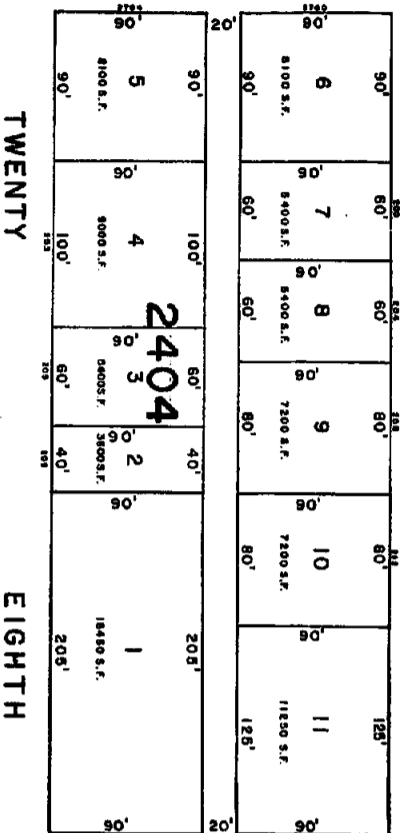
2105

24377 S.F. TOTAL

AVENUE

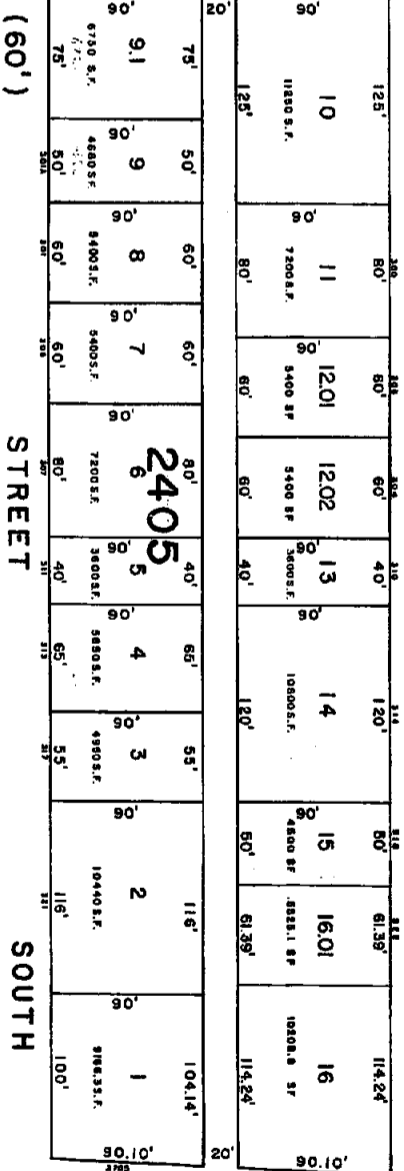
REVERE

(60')



BRIGANTINE

(100')



OCEAN

(80')

TWENTY STREET SEVENTH

STREET SOUTH

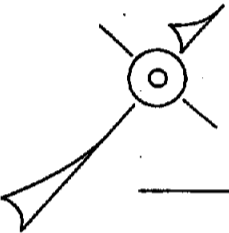
SOUTH

(60')

STREET

(60')

(80')



NEW JERSEY DEPARTMENT OF THE TREASURY  
 LOCAL, PROPERTY AND PUBLIC UTILITY TAXES  
 DIVISION  
 ATTACHED AS A TAX MAP PURSUANT TO THE  
 PROVISIONS OF P.L. 1989-10, CHAPTER 127,  
 FOR THE OFFICE OF THE CLERK OF THE  
 COUNTY OF BRIGANTINE

*John Spitznagel* CLERK

PL. 1989-10, CHAPTER 127, SECTION 12-10.1  
 PL. 1989-10, CHAPTER 127, SECTION 12-10.2

**TAX MAP**  
 CITY OF BRIGANTINE  
 ATLANTIC COUNTY, NEW JERSEY  
 SCALE 1" = 60'  
**WILLIAM C. KISSANE** N.J. L.S. 1007427  
 113 SO. CHESTNUT ST., PLEASANTVILLE, N.J.  
 609-941-2100 FAX 609-941-2123