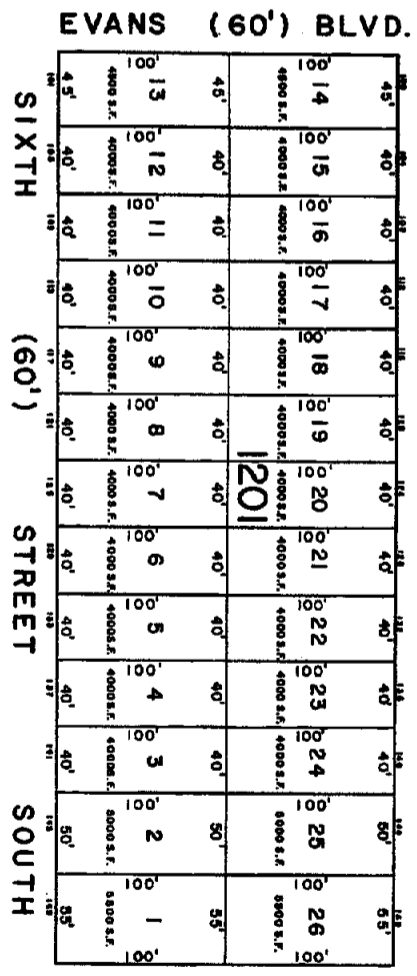
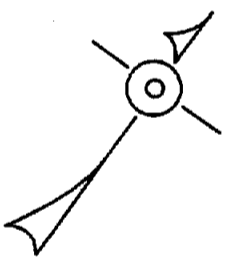
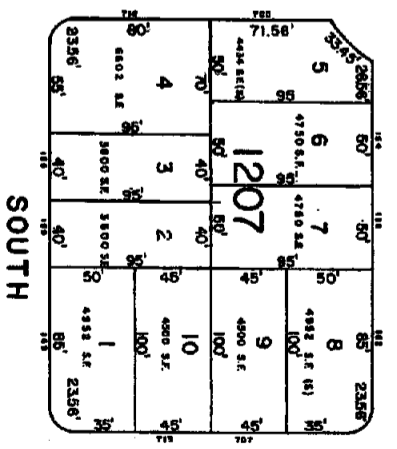
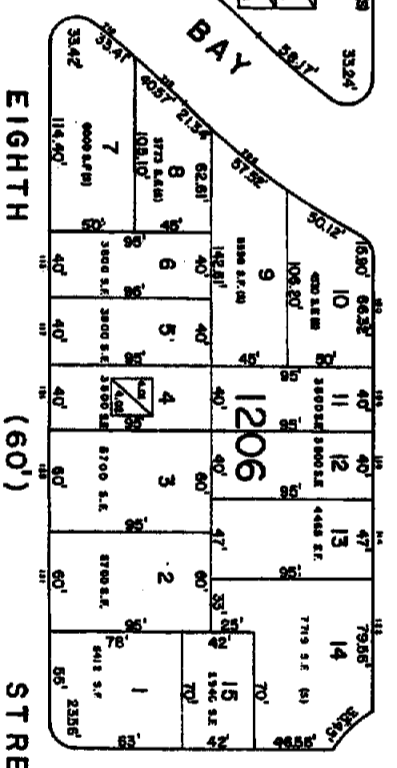
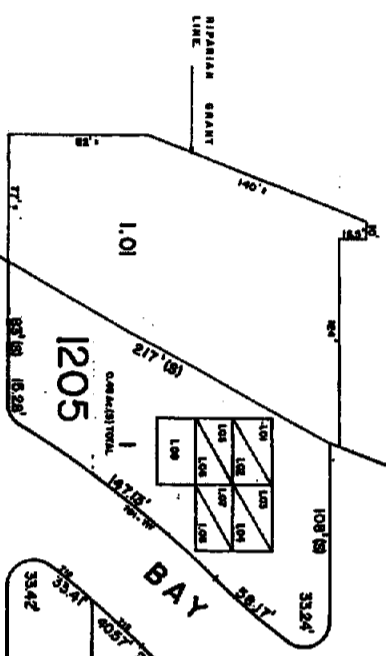
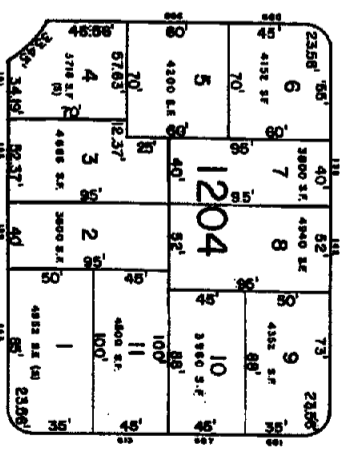
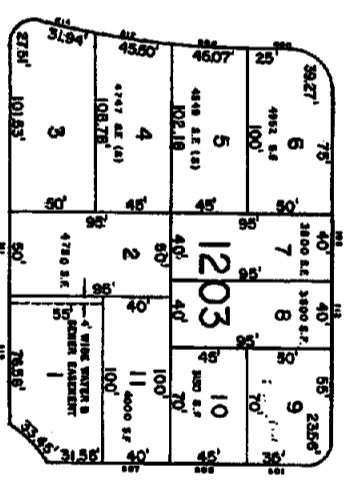
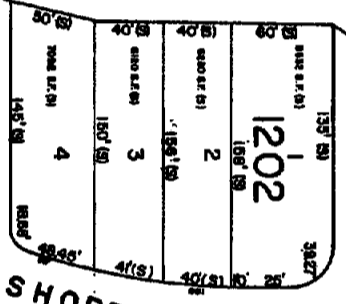


FIFTH (60') STREET SOUTH



12
356

BAREMORE QUARTERS



REV. JULY 4, 1981
REV. APR. 13, 1981

NEW STATE DEPARTMENT OF THE TREASURY
LOCAL PROPERTY AND PUBLIC UTILITY SERVICE
APPEARING AS A TAX MAP PREPARED BY THE
STATE DEPARTMENT OF THE TREASURY
FROM THE DIRECTOR'S OFFICE OF TAXATION

John A. Kissane
JACK KISSANE
CITY ENGINEER

TAX MAP
CITY OF BRIGANTINE
ATLANTIC COUNTY, NEW JERSEY
SCALE: 1" = 60'
WILLIAM C. KISSANE, N.J. LAND SURVEYOR
115 SO. CHESTNUT ST., PLEASANTVILLE, N.J.
PLANNING & SURVEYING, INC., P.O. BOX 2472
PLEASANTVILLE, N.J. 08078