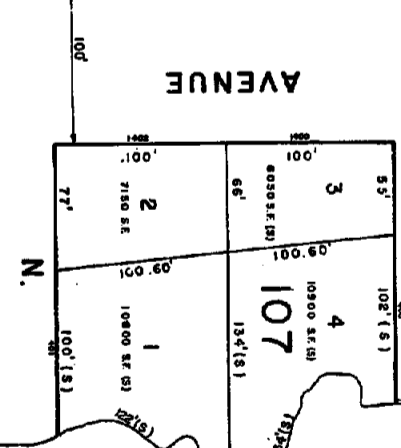
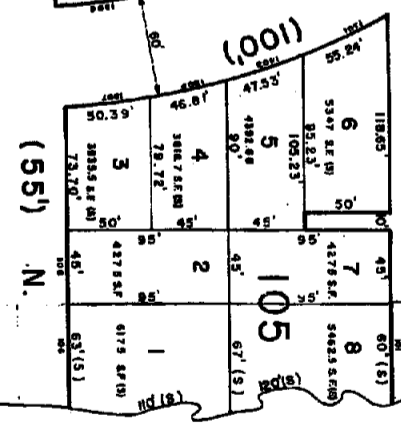
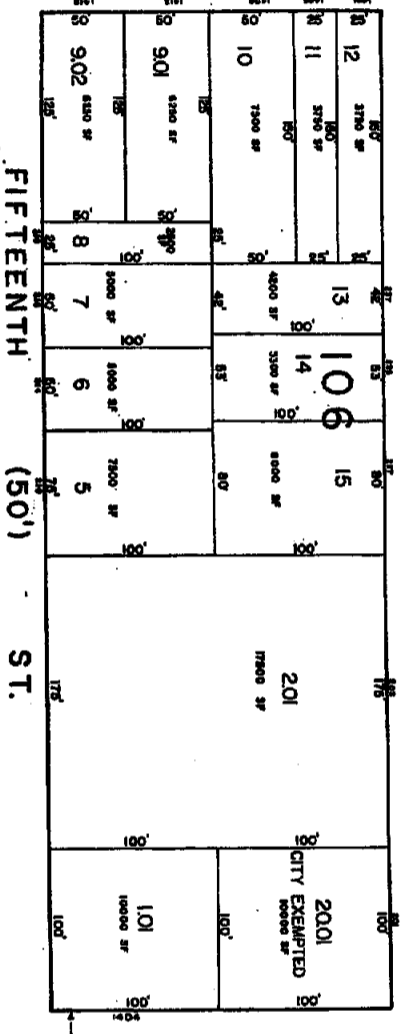
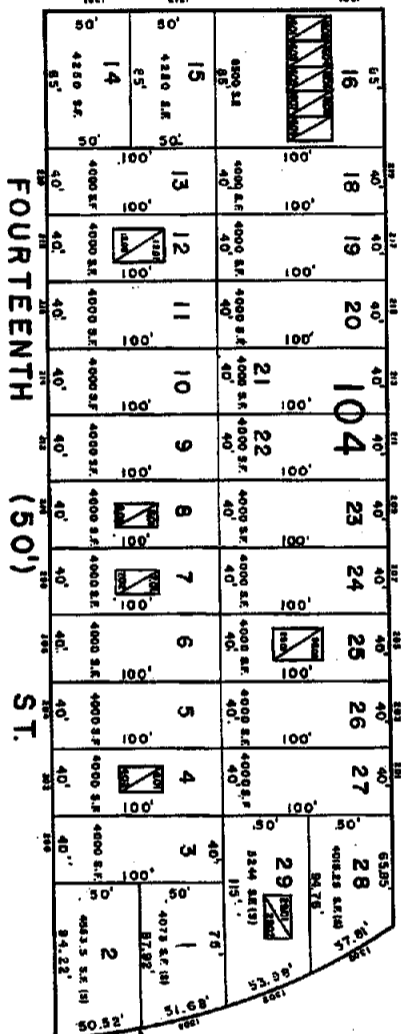
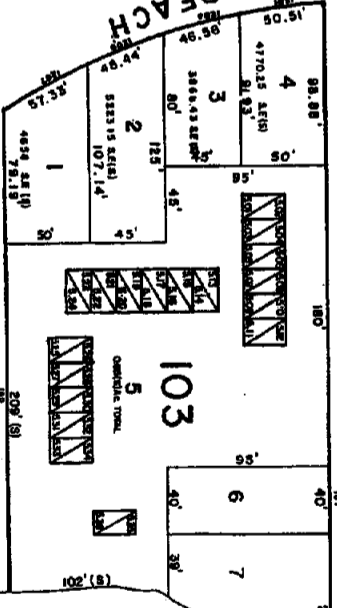
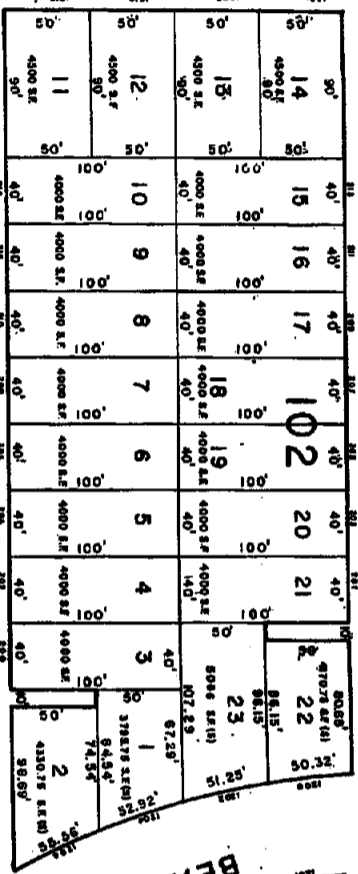


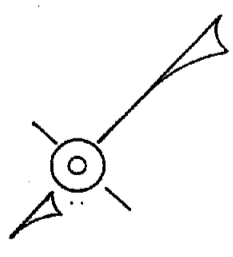
TWELFTH (50') ST.

(60') N.

EVANS BOULEVARD



STEELEMAN'S BAY



8425

INDEX SHEET

345

**TAX MAP**  
 CITY OF BRIGANTINE  
 ATLANTIC COUNTY NEW JERSEY

WILLIAM C. KISSANE  
 ALL RIGHTS RESERVED  
 113 SO. CHESTNUT ST. PLEASANTVILLE, N.J.  
 REV. SEPT. 23, 1983  
 REV. APR. 13, 1990  
 REV. JAN. 16, 1990

NEW JERSEY DEPARTMENT OF TREASURY  
 LOCAL, PROPERTY AND PUBLIC UTILITY SERVICE  
 APPROVED AS A TAX MAP PURSUANT TO THE  
 PROVISIONS OF THE TAX MAP ACT, P.L. 1982-14  
 DIVISION OF REVENUE, OFFICE OF TAX MAPS  
 DIVISION 2, 100-1000, 100

*William C. Kissane* PLANK  
 BY UC 91548 CHART EXEMPTION 6.5.8