

REVISIONS

DATE	REVISIONS	BY
7/2/1988	BLK 621: CONS. 1, 2 & 3 INTO 1	DWP

SHEET 101



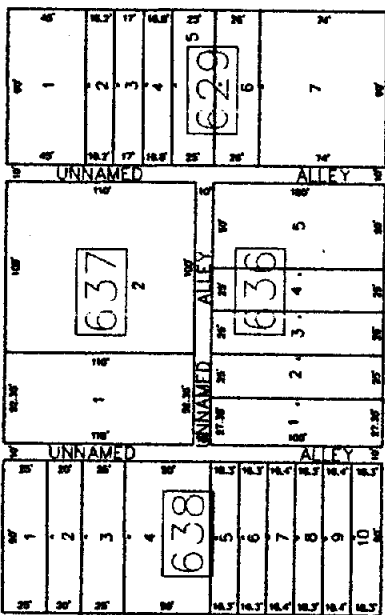
MCKINLEY AVE

TAX MAP  
 CITY OF ATLANTIC CITY  
 ATLANTIC COUNTY, NEW JERSEY  
 SCALE: 1" = 50'  
 DATE: AUG 1995  
 ROBERT BADGER  
 ENGINEER  
 OFFICE OF THE CITY ENGINEER  
 1000 N. BROAD ST., 3RD FLOOR  
 ATLANTIC CITY, NJ 08402

SHEET 103

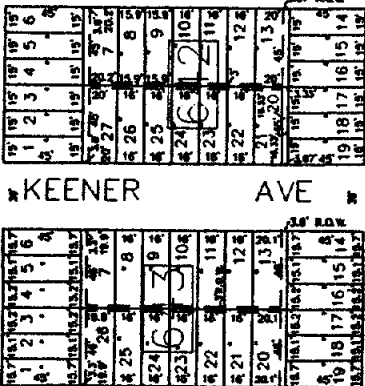
MONROE AVE

MARMORA

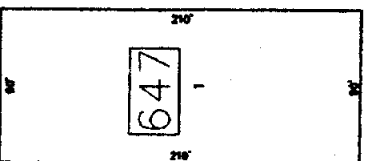


MICHIGAN

UNNAMED AVE



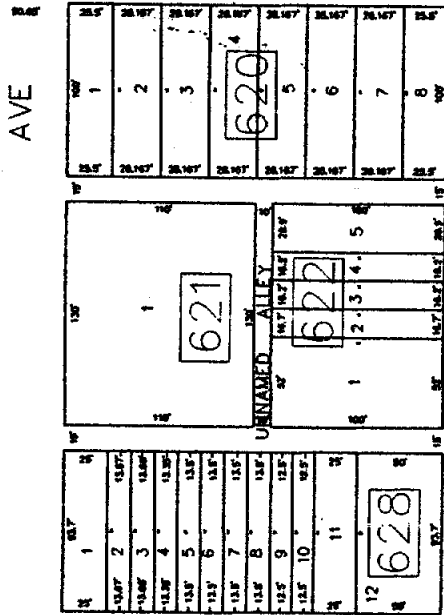
EMERSON AVE



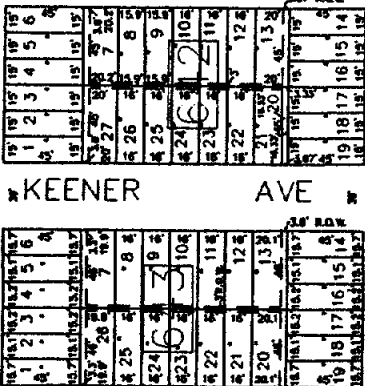
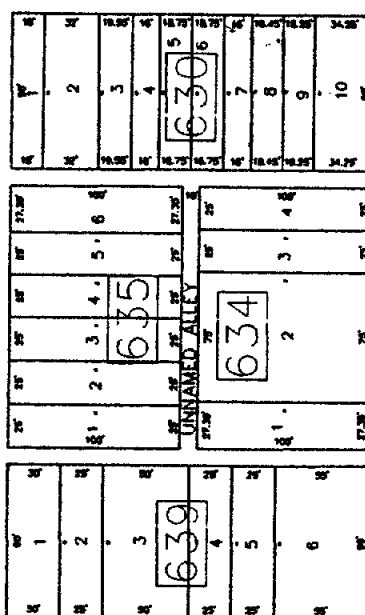
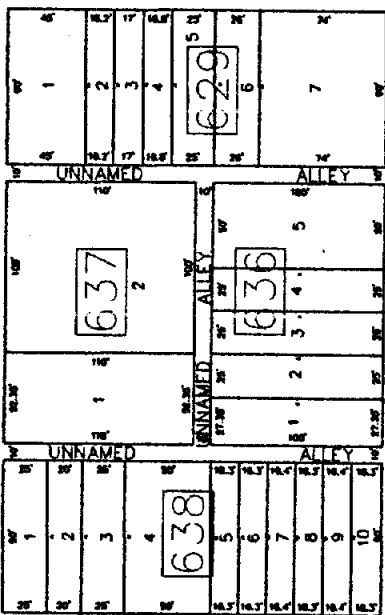
ARKANSAS

SHEET 82

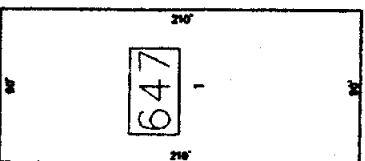
INDIANA



OHIO



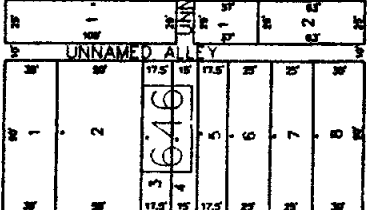
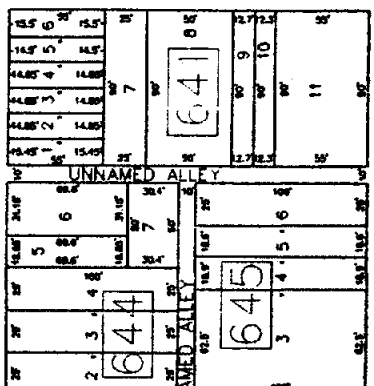
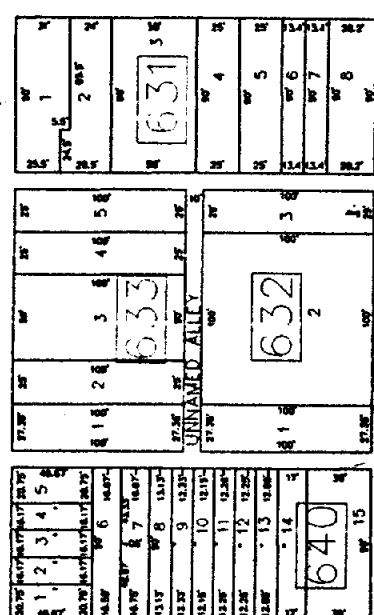
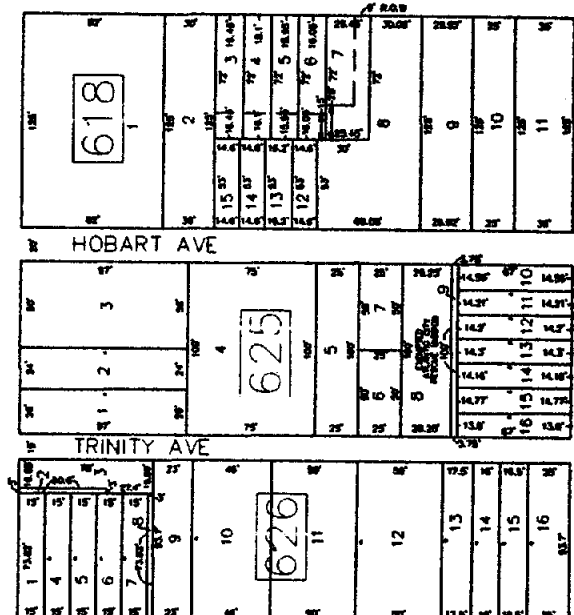
EMERSON AVE



ARKANSAS

MCKINLEY

GRANT



AVE

MAGELLAN

AVE

LINCOLN

AVE

AVE

AVE

AVE

AVE

SHEET 84

SHEET 83