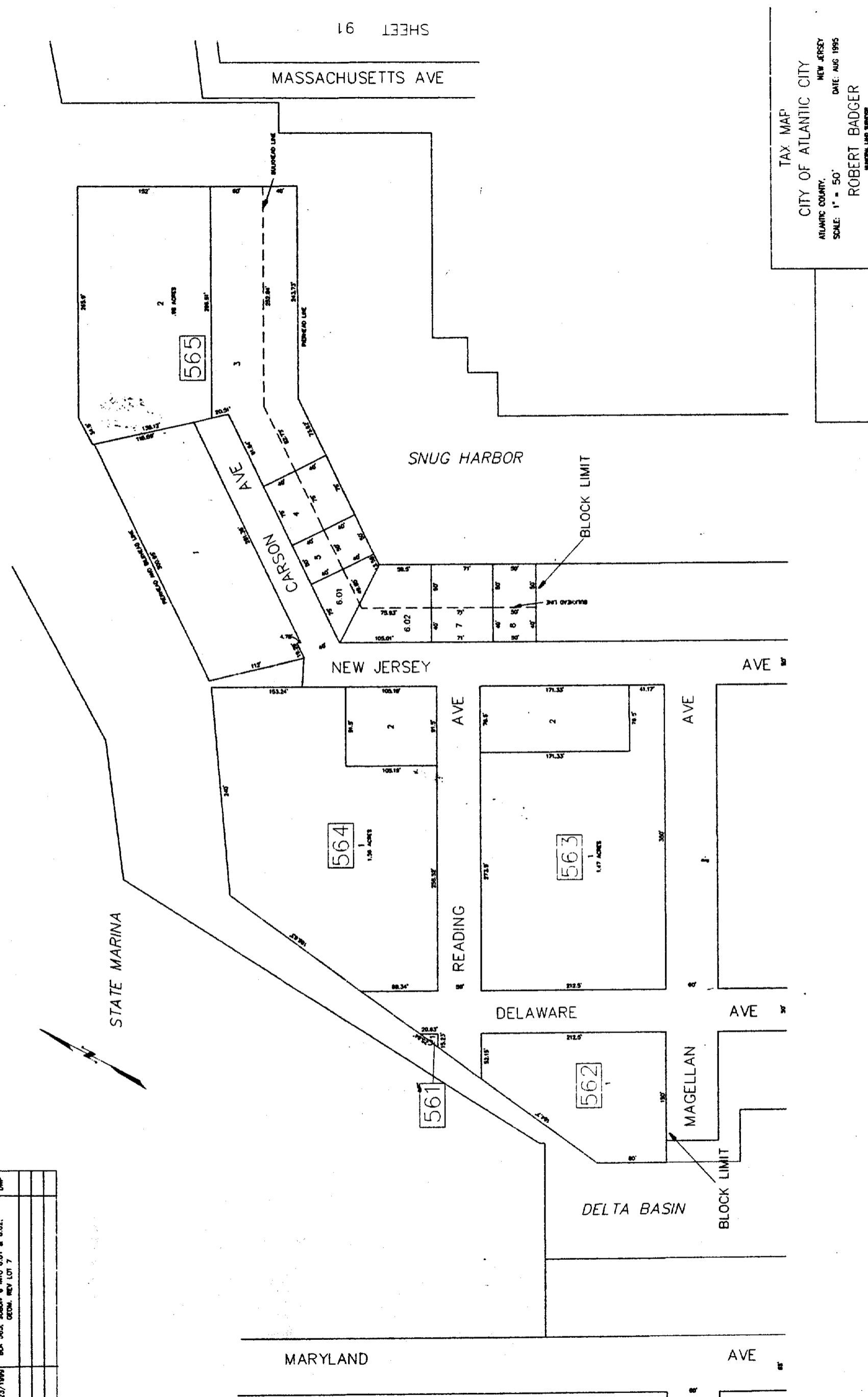


SHEET 92

SHEET 89

SHEET 87

REVISIONS	
DATE	BY
3/22/1999	DWP
BLK 565; DELETE REP. LOT NO. 5	
3/23/1999	DWP
BLK 565; SUBDIV. 6 INTO 6.01 & 6.02; CDEM. REV LOT 7	



TAX MAP
 CITY OF ATLANTIC CITY
 ATLANTIC COUNTY, NEW JERSEY
 SCALE: 1" = 50'
 DATE: AUG 1995
 ROBERT BADGER
 SURVING LAND SURVEYOR
 1000 W. 10TH ST. SUITE 100
 ATLANTIC CITY, NJ 08401

MAGELLAN AVE