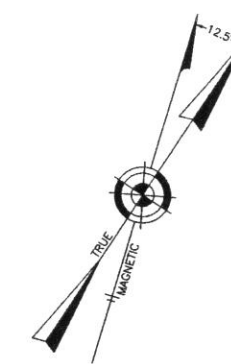
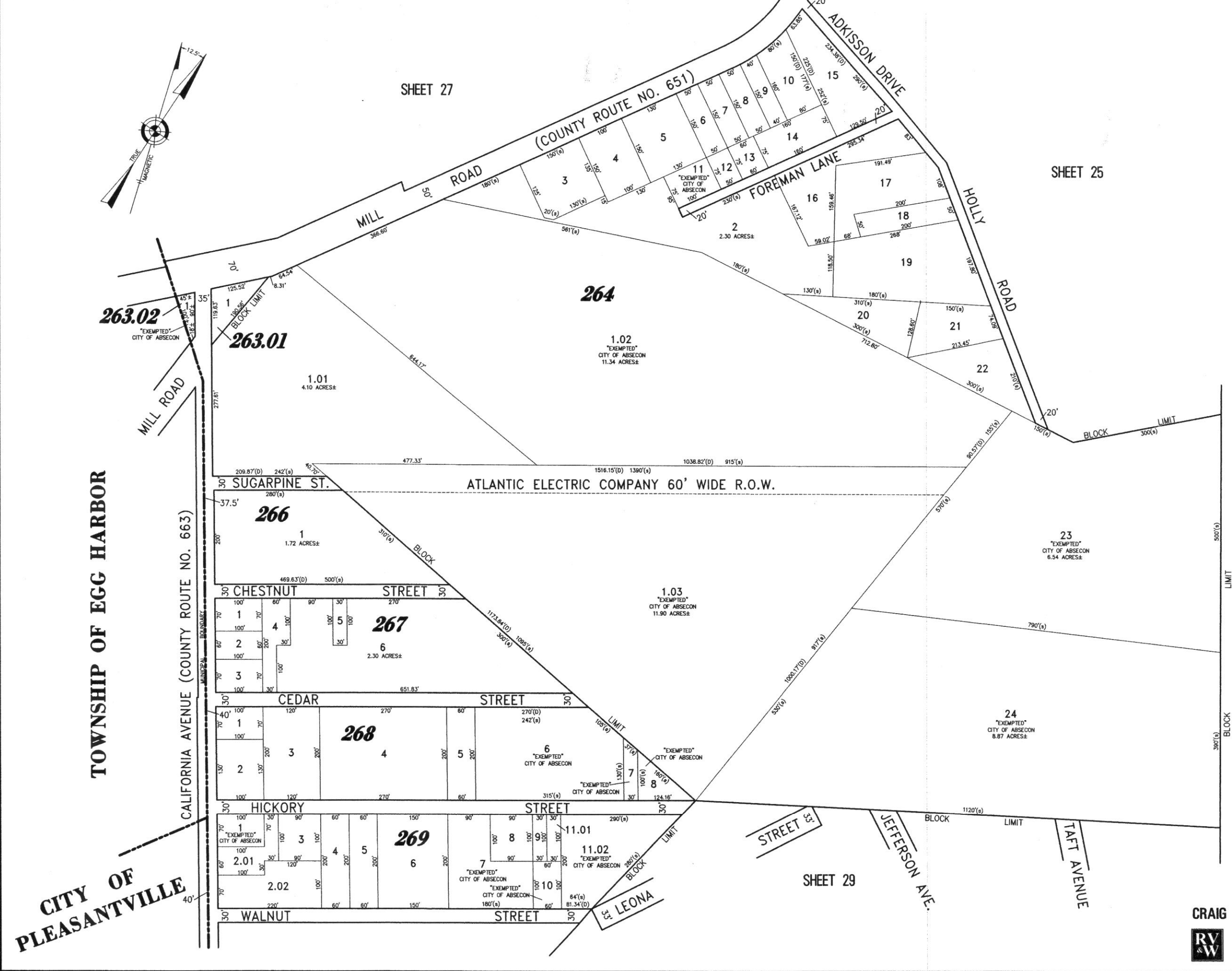


NOTE:
THIS SHEET HAS BEEN REDRAWN USING COMPUTER AIDED DRAFTING/DESIGN
(CAD/D) BASED ON THE MAP PREPARED BY: RONALD J. PRICE, N.J. LICENSE NO. 13901,
NORTHFIELD, NEW JERSEY.



TOWNSHIP OF EGG HARBOR

CITY OF PLEASANTVILLE

CALIFORNIA AVENUE (COUNTY ROUTE NO. 663)

N.J. JERSEY DEPT. OF THE TREASURY
DIRECTOR OF TAXATION
PROPERTY ADMINISTRATION
APPROVED AS A TAX MAP PURSUANT TO THE AUTHORITY OF
N.J.S.A. 54:5-9 & 54:5-10
FOR THE OFFICIAL RECORD OF TAXATION
THOMAS J. LIPONE, LOCAL GOVT. AID ASSISTANCE C.T.A.
Thomas J. Lipone
SARFIO C. DICOMANO, PROFESSIONAL REPRESENTATIVE C.T.A.
DATE: 11-10-2005

TAXMAP
CITY OF ABSECON

ATLANTIC COUNTY NEW JERSEY
SCALE: 1" = 100' DATE: 11-10-2005

CRAIG F. REMINGTON LAND SURVEYOR LIC. NO. 23924
REMINGTON, VERNICK & WALBERG ENGINEERS
845 N MAIN STREET, PLEASANTVILLE, N.J. 08232
(609) 645-7000 FAX (609) 645-7076
WEB SITE ADDRESS: WWW.RVWE.COM

