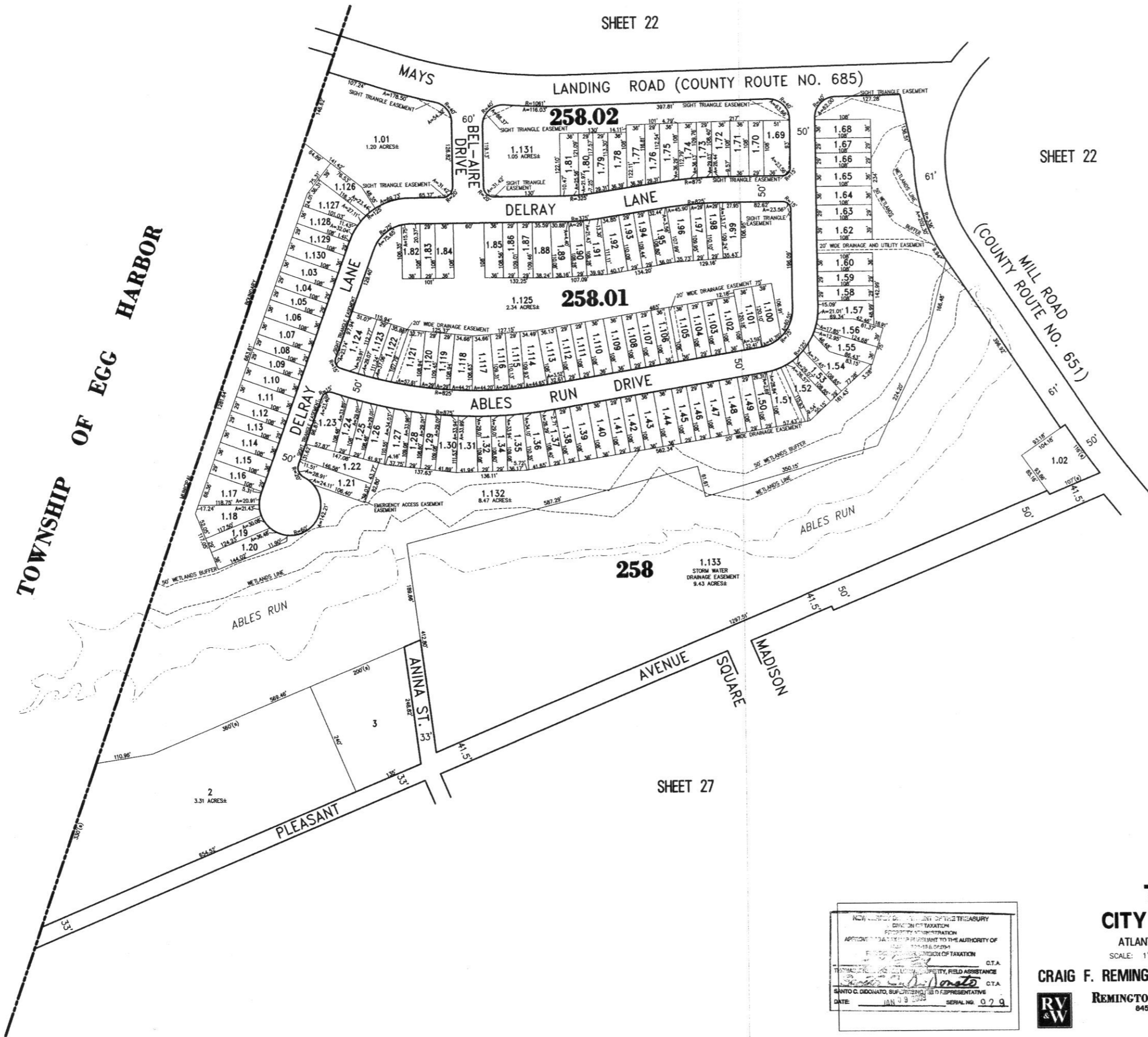
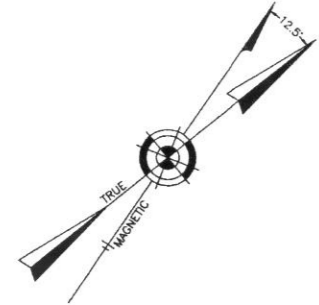


NOTE
THIS SHEET HAS BEEN REDRAWN USING COMPUTER AIDED DRAFTING/DESIGN (CAD) BASED ON THE MAP PREPARED BY RONALD J. PRICE, N.J. LICENSE NO. 03904, NORTHFIELD, NEW JERSEY.



NEW JERSEY DEPARTMENT OF TREASURY
DIVISION OF TAXATION
APPOINTED TO ASSIST IN THE AUTHORITY OF
CRAIG F. REMINGTON, LAND SURVEYOR
DATE: JAN 08 2005 SERIAL NO. 029

TAXMAP
CITY OF ABSECON
ATLANTIC COUNTY NEW JERSEY
SCALE: 1" = 100' DATE: 11-10-2005
CRAIG F. REMINGTON LAND SURVEYOR LIC. NO. 23924
REMINGTON, VERNICK & WALBERG ENGINEERS
24 GA 28048700
845 N. MAIN STREET, PLEASANTVILLE, N.J. 08232
(609) 645-7100 FAX (609) 645-7076
WEB SITE ADDRESS: WWW.RVVE.COM