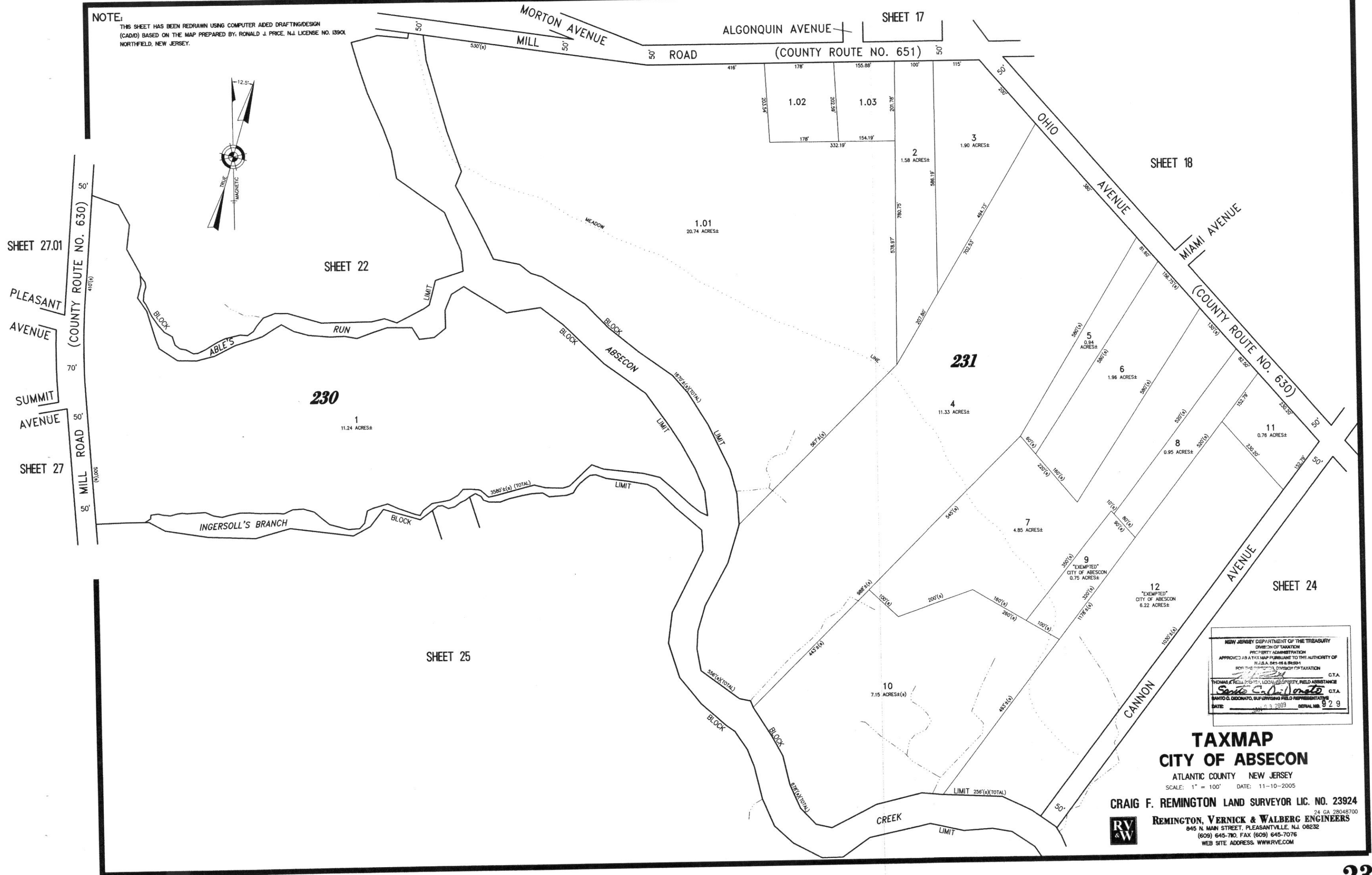
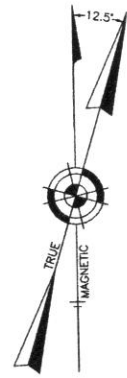


NOTE:

THIS SHEET HAS BEEN REDRAWN USING COMPUTER AIDED DRAFTING/DESIGN (CAD/D) BASED ON THE MAP PREPARED BY: RONALD J. PRICE, N.J. LICENSE NO. 13901 NORTHFIELD, NEW JERSEY.



NEW JERSEY DEPARTMENT OF THE TREASURY
DIVISION OF TAXATION
PROPERTY ADMINISTRATION
APPROVED AS A TAX MAP PURSUANT TO THE AUTHORITY OF
N.J.S.A. 54:1-46 & 54:1-47
FOR THE MUNICIPAL DIVISION OF TAXATION
C.T.A.
Sanjo C. DiNardo
C.T.A.
SAVIO G. DICICATO, SUPERVISOR FIELD REPRESENTATIVE
DATE: 11-10-2005 SERIAL NO. 929

TAXMAP
CITY OF ABSECON

ATLANTIC COUNTY NEW JERSEY
SCALE: 1" = 100' DATE: 11-10-2005

CRAIG F. REMINGTON LAND SURVEYOR LIC. NO. 23924

RV & W
REMINGTON, VERNICK & WALBERG ENGINEERS
24 GA 28048700
845 N. MAIN STREET, PLEASANTVILLE, N.J. 08232
(609) 645-7000, FAX (609) 645-7076
WEB SITE ADDRESS: WWW.RVW.COM