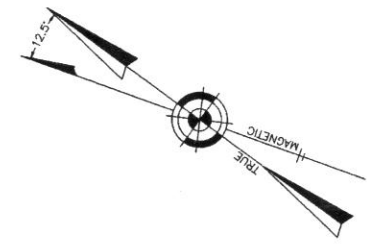


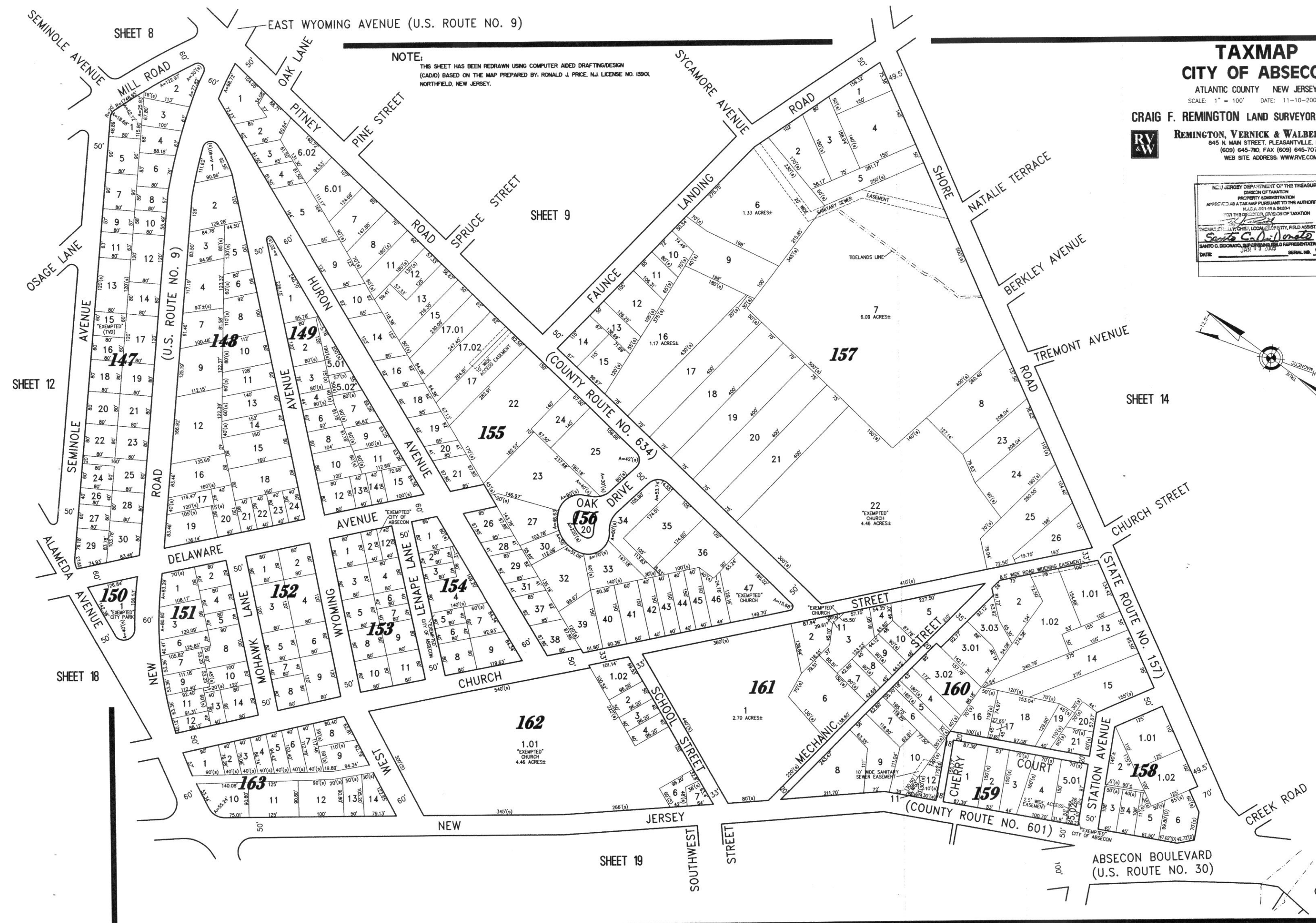
### TAXMAP CITY OF ABSECON

ATLANTIC COUNTY NEW JERSEY  
SCALE: 1" = 100' DATE: 11-10-2005  
CRAIG F. REMINGTON LAND SURVEYOR LIC. NO. 23924  
REMINGTON, VERNICK & WALBERG ENGINEERS  
845 N. MAIN STREET, PLEASANTVILLE, N.J. 08232  
(609) 645-7800 FAX: (609) 645-7076  
WEB SITE ADDRESS: WWW.RVW.COM

N.J. DEPARTMENT OF THE TREASURY  
DIVISION OF TAXATION  
PROPERTY ADMINISTRATION  
APPROVED AS A TAX MAP PURSUANT TO THE AUTHORITY OF  
N.J.A.C. 17:27.8.1  
FOR THE CITY OF ABSECON, DIVISION OF TAXATION  
THOMAS J. LUCAS, COUNTY CLERK, FIELD ASSISTANCE  
SANTA C. DI DONATO, COUNTY CLERK, FIELD ASSISTANCE  
DATE: 11/10/2005



NOTE:  
THIS SHEET HAS BEEN REDRAWN USING COMPUTER AIDED DRAFTING/DESIGN  
(CAD) BASED ON THE MAP PREPARED BY: RONALD J. PRICE, N.J. LICENSE NO. 13901,  
NORTHFIELD, NEW JERSEY.



SHEET 8

EAST WYOMING AVENUE (U.S. ROUTE NO. 9)

SHEET 9

SHEET 12

SHEET 14

SHEET 18

SHEET 19