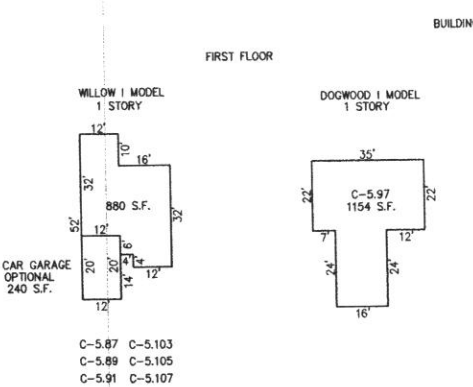
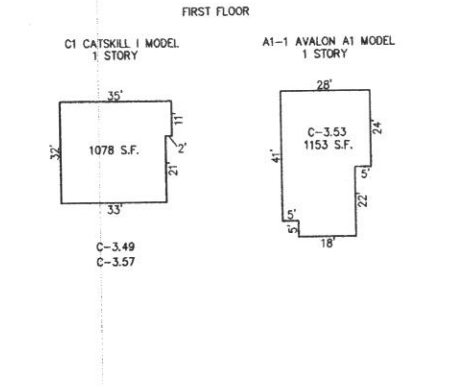
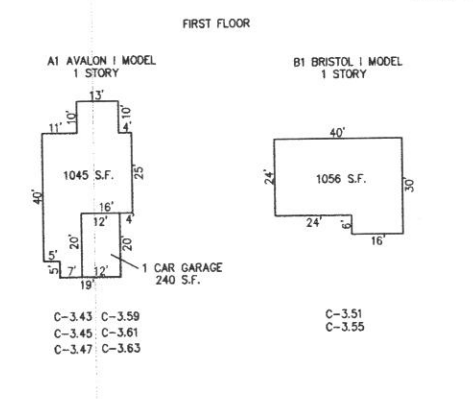
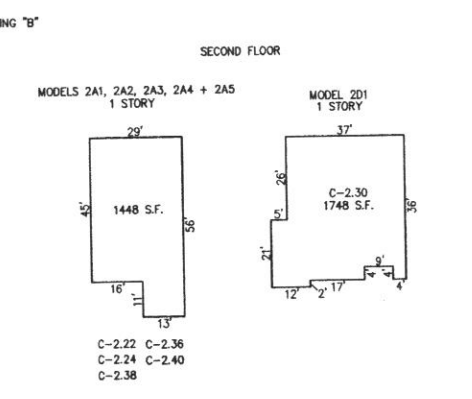
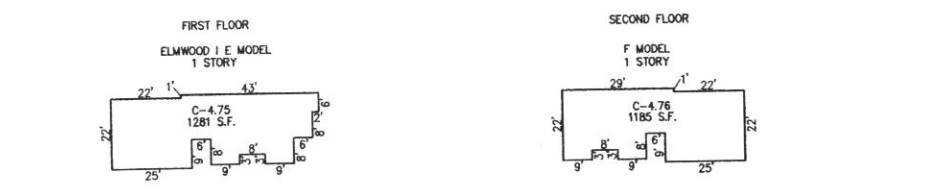
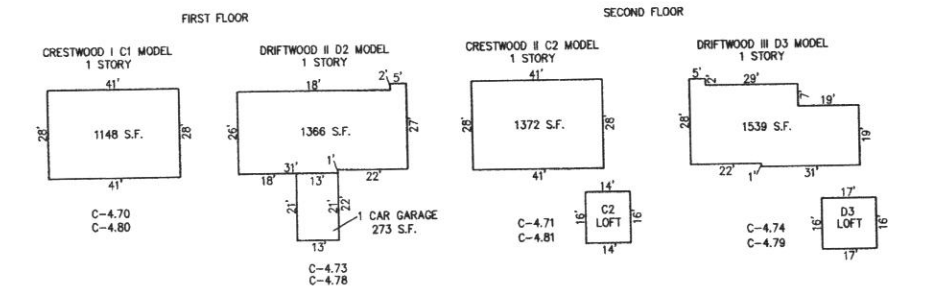
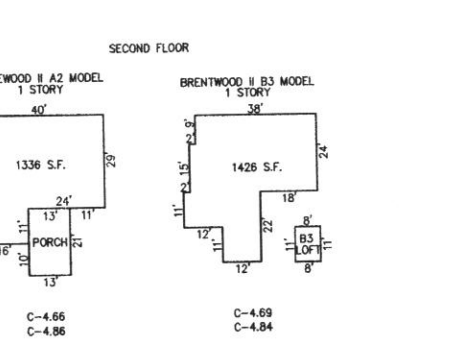
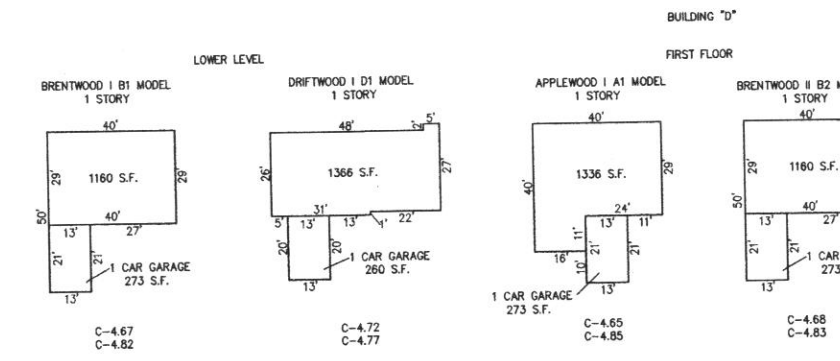
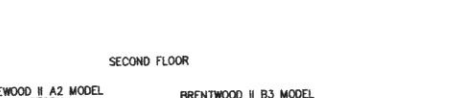
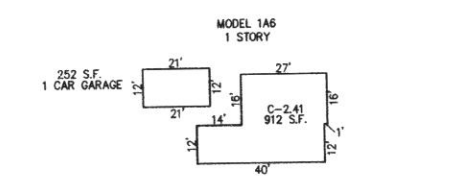
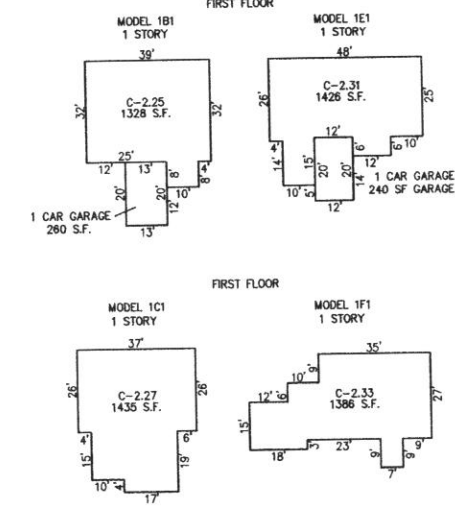
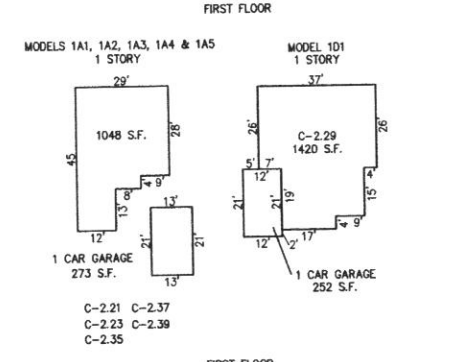
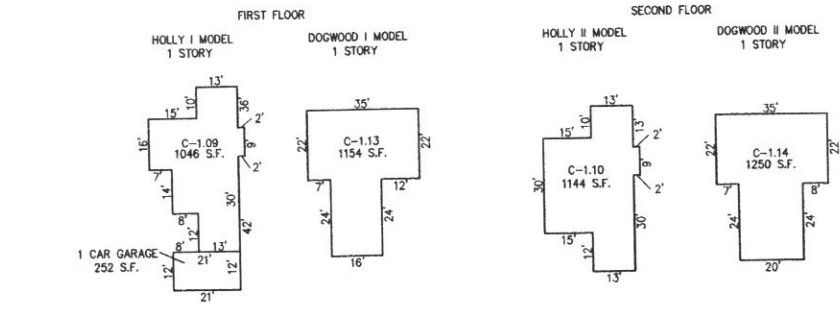
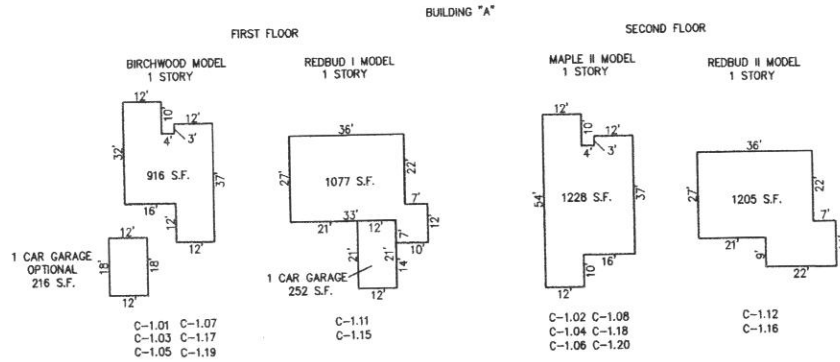


NOTE:

THIS SHEET HAS BEEN REDRAWN USING COMPUTER AIDED DRAFTING/DESIGN (CAD/D) BASED ON THE MAP PREPARED BY: RONALD J. PRICE, N.J. LICENSE NO. 13904, NORTHFIELD, NEW JERSEY.



NOTE: DIMENSIONS AND SQUARE FOOTAGE ARE TYPICAL FOR ALL SIMILAR UNITS
DETAILS
SCALE: 1"=30'

PLATE 3
BLOCKS 8 & 9.02, LOT 4
WOODLAND VILLAGE CONDOMINIUM
INSET "A"

NEW JERSEY DEPARTMENT OF THE TREASURY
DIVISION OF TAXATION
PROPERTY ADMINISTRATION
APPROVED AS A TAXMAP PURSUANT TO THE AUTHORITY OF
N.J.A.C. 17:27-18.8 (b)(3)
FOR THE OFFICIAL DIVISION OF TAXATION
THOMAS J. KELLY, CHIEF, PROPERTY, FIELD ASSISTANCE
SANTO G. DONNINO, SUPERVISOR, FIELD REPRESENTATIVE
DATE: JAN 9 9 2005

TAXMAP
CITY OF ABSECON
ATLANTIC COUNTY NEW JERSEY
SCALE: 1" = 30' DATE: 11-10-2005
CRAIG F. REMINGTON LAND SURVEYOR LIC. NO. 23924
REMINGTON, VERNICK & WALBERG ENGINEERS
845 N. MAIN STREET, PLEASANTVILLE, N.J. 08232
(609) 645-700, FAX (609) 645-7076
WEB SITE ADDRESS: WWW.RVW.COM