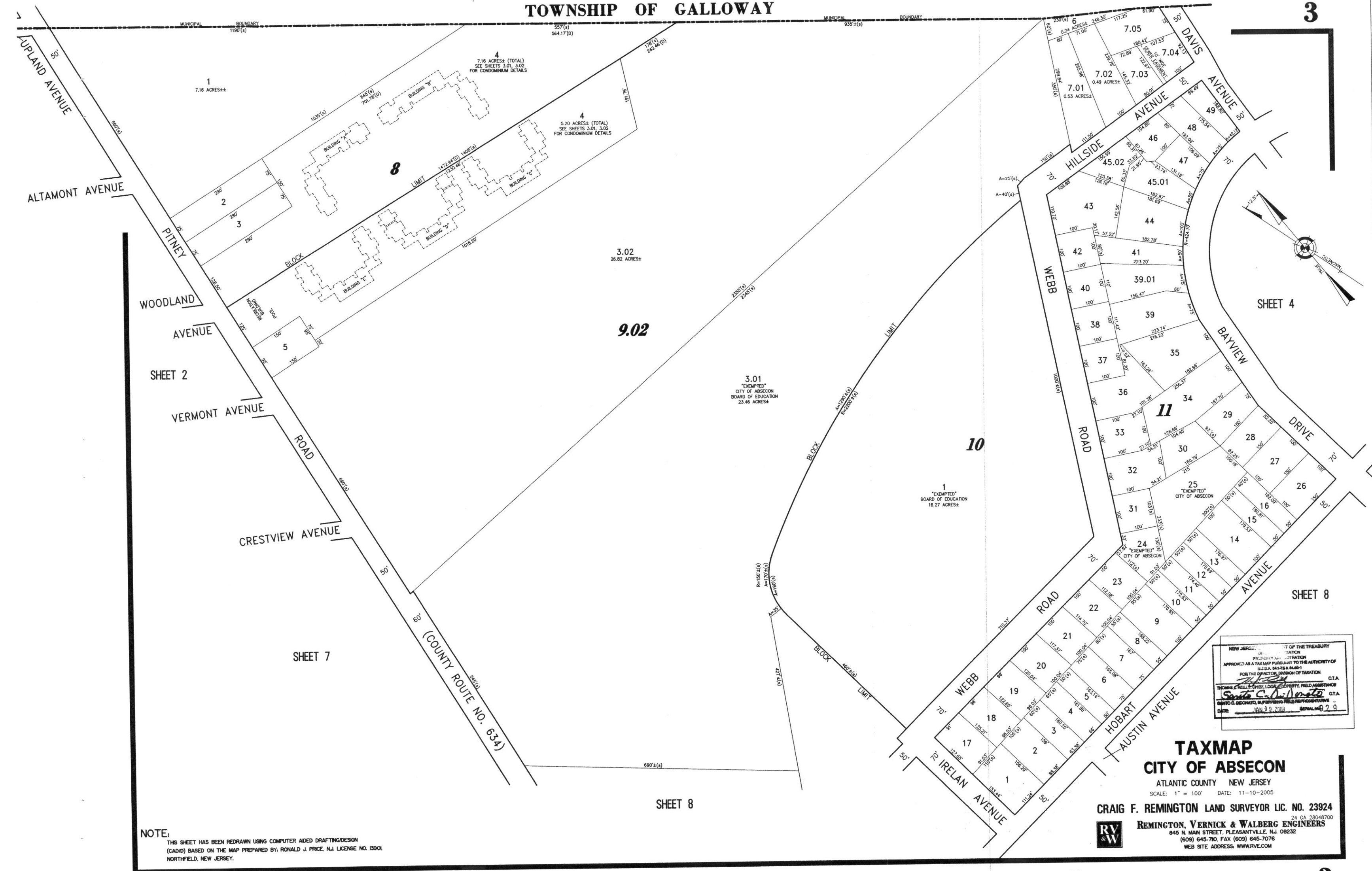


TOWNSHIP OF GALLOWAY



NOTE: THIS SHEET HAS BEEN REDRAWN USING COMPUTER AIDED DRAFTING/DESIGN (CAD) BASED ON THE MAP PREPARED BY RONALD J. PRICE, N.J. LICENSE NO. 12904, NORTHFIELD, NEW JERSEY.

NEW JERSEY  
OFFICE OF THE TREASURER  
PROJECT NO. 0000000000  
APPROVED AS A TAX MAP PURSUANT TO THE AUTHORITY OF  
N.J.S.A. 52:27-10  
FOR THE OFFICIAL RECORD OF TAXATION  
C.S.A.  
THOMAS C. HILL, COUNTY CLERK, HILLSIDE, N.J.  
C.S.A.  
RECORDS SECTION, OFFICE OF THE TREASURER  
DATE: JAN 28, 2009 SERIAL NO. 2 3

**TAXMAP**  
**CITY OF ABSECON**  
ATLANTIC COUNTY NEW JERSEY  
SCALE: 1" = 100' DATE: 11-10-2005  
CRAIG F. REMINGTON LAND SURVEYOR LIC. NO. 23924  
REMINGTON, VERNICK & WALBERG ENGINEERS  
24 GA. 28042700  
845 N. MAIN STREET, PLEASANTVILLE, NJ 08232  
(609) 645-7070 FAX (609) 645-7076  
WEB SITE ADDRESS: WWW.RVE.COM