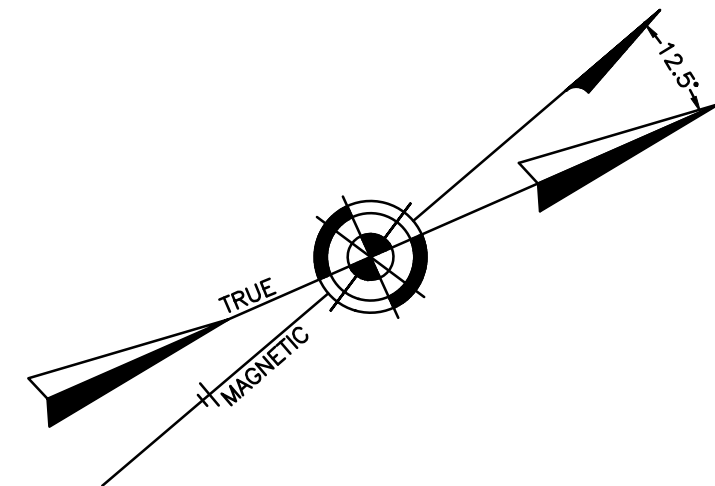


REVISIONS		
11-27-2012	CRAIG F. REMINGTON	23924
7-25-2014	CRAIG F. REMINGTON	23924

NOTE:
THIS SHEET HAS BEEN REDRAWN USING COMPUTER AIDED DRAFTING/DESIGN (CAD/D) BASED ON THE MAP PREPARED BY: RONALD J. PRICE, N.J. LICENSE NO. 13901, NORTHFIELD, NEW JERSEY.

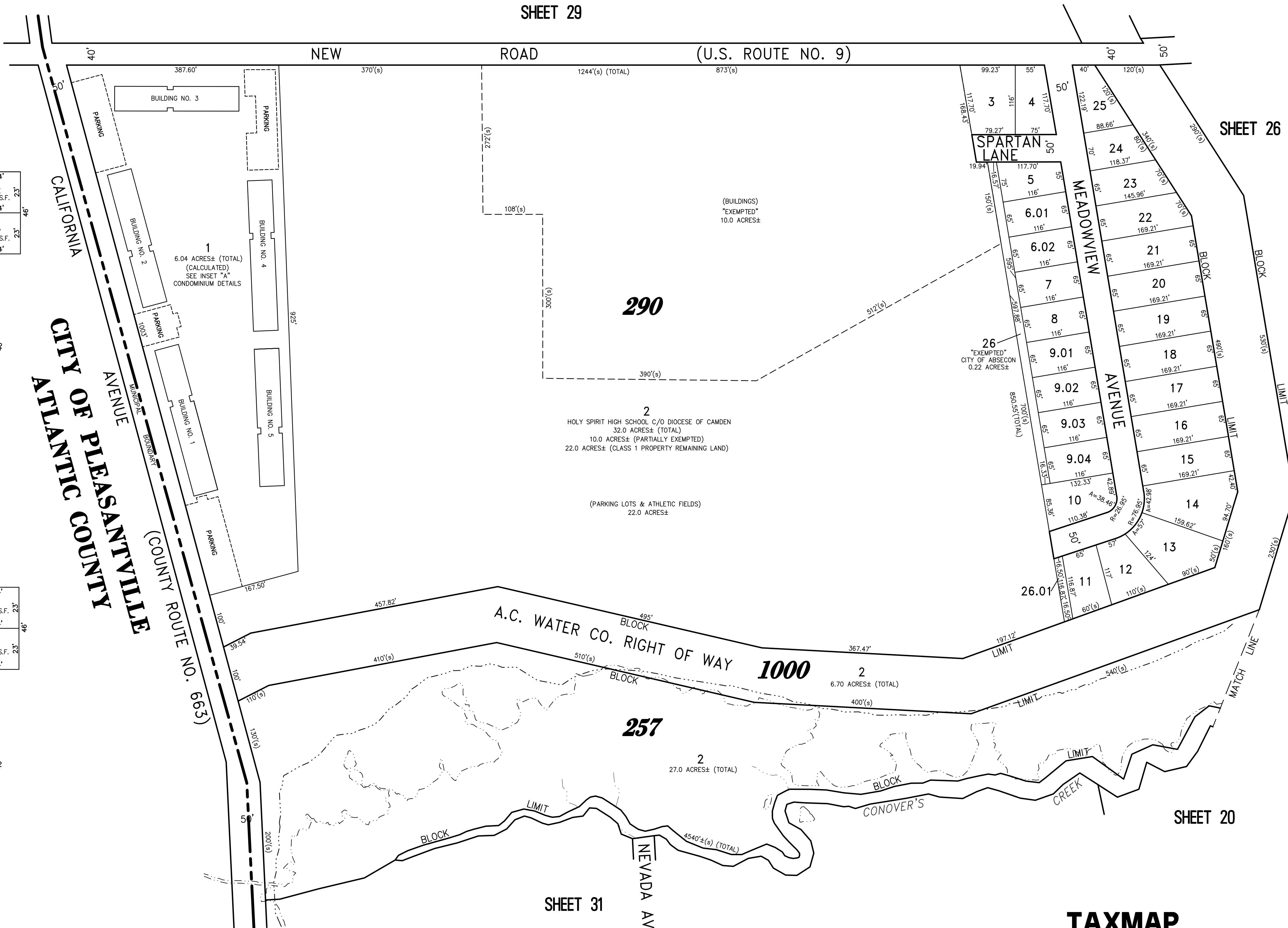


SHEET 29

BUILDING NO. 1 TWO STORY UNITS															
24'	24'	24'	24'	24'	24'	24'	24'	24'	24'	24'	24'	24'	24'	24'	24'
23' ²³	C1A	23' ²³	C1B	23' ²³	C1C	23' ²³	C1D	23' ²³	C1E	23' ²³	C1F	23' ²³	C1G	23' ²³	C1H
1104 S.F.		1104 S.F.		1104 S.F.		1104 S.F.		1104 S.F.		1104 S.F.		1104 S.F.		1104 S.F.	
24'	24'	24'	24'	24'	24'	24'	24'	24'	24'	24'	24'	24'	24'	24'	24'
23' ²³	C1I	23' ²³	C1M	23' ²³	C1N	23' ²³	C1O	23' ²³	C1P	23' ²³	C1Q	23' ²³	C1R	23' ²³	C1S
1104 S.F.		1104 S.F.		1104 S.F.		1104 S.F.		1104 S.F.		1104 S.F.		1104 S.F.		1104 S.F.	
24'	24'	24'	24'	24'	24'	24'	24'	24'	24'	24'	24'	24'	24'	24'	24'
23' ²³	C1T	23' ²³	C1U	23' ²³	C1V	23' ²³	COMMON ELEMENT	23' ²³	C1W	23' ²³	C1X	23' ²³	C1Y	23' ²³	C1Z
1104 S.F.		1104 S.F.		1104 S.F.		1104 S.F.		1104 S.F.		1104 S.F.		1104 S.F.		1104 S.F.	
24'	24'	24'	24'	24'	24'	24'	24'	24'	24'	24'	24'	24'	24'	24'	24'
23' ²³	C2K	23' ²³	C2L	23' ²³	C2M	23' ²³	C2N	23' ²³	C2O	23' ²³	C2P	23' ²³	C2Q	23' ²³	C2R
1104 S.F.		1104 S.F.		1104 S.F.		1104 S.F.		1104 S.F.		1104 S.F.		1104 S.F.		1104 S.F.	
24'	24'	24'	24'	24'	24'	24'	24'	24'	24'	24'	24'	24'	24'	24'	24'
23' ²³	C2A	23' ²³	C2B	23' ²³	C2C	23' ²³	C2D	23' ²³	C2E	23' ²³	C2F	23' ²³	C2G	23' ²³	C2H
1104 S.F.		1104 S.F.		1104 S.F.		1104 S.F.		1104 S.F.		1104 S.F.		1104 S.F.		1104 S.F.	
24'	24'	24'	24'	24'	24'	24'	24'	24'	24'	24'	24'	24'	24'	24'	24'
23' ²³	C3A	23' ²³	C3B	23' ²³	C3C	23' ²³	C3D	23' ²³	C3E	23' ²³	C3F	23' ²³	C3G	23' ²³	C3H
1104 S.F.		1104 S.F.		1104 S.F.		1104 S.F.		1104 S.F.		1104 S.F.		1104 S.F.		1104 S.F.	
24'	24'	24'	24'	24'	24'	24'	24'	24'	24'	24'	24'	24'	24'	24'	24'
23' ²³	C3I	23' ²³	C3J	23' ²³	C3K	23' ²³	C3L	23' ²³	C3M	23' ²³	C3N	23' ²³	C3O	23' ²³	C3P
1104 S.F.		1104 S.F.		1104 S.F.		1104 S.F.		1104 S.F.		1104 S.F.		1104 S.F.		1104 S.F.	
24'	24'	24'	24'	24'	24'	24'	24'	24'	24'	24'	24'	24'	24'	24'	24'
23' ²³	C4A	23' ²³	C4B	23' ²³	C4C	23' ²³	C4D	23' ²³	C4E	23' ²³	C4F	23' ²³	C4G	23' ²³	C4H
1104 S.F.		1104 S.F.		1104 S.F.		1104 S.F.		1104 S.F.		1104 S.F.		1104 S.F.		1104 S.F.	
24'	24'	24'	24'	24'	24'	24'	24'	24'	24'	24'	24'	24'	24'	24'	24'
23' ²³	C4I	23' ²³	C4J	23' ²³	C4K	23' ²³	COMMON ELEMENT	23' ²³	C4L	23' ²³	C4M	23' ²³	C4N	23' ²³	C4O
1104 S.F.		1104 S.F.		1104 S.F.		1104 S.F.		1104 S.F.		1104 S.F.		1104 S.F.		1104 S.F.	
24'	24'	24'	24'	24'	24'	24'	24'	24'	24'	24'	24'	24'	24'	24'	24'
23' ²³	C5A	23' ²³	C5B	23' ²³	C5C	23' ²³	C5D	23' ²³	C5E	23' ²³	C5F	23' ²³	C5G	23' ²³	C5H
1104 S.F.		1104 S.F.		1104 S.F.		1104 S.F.		1104 S.F.		1104 S.F.		1104 S.F.		1104 S.F.	
24'	24'	24'	24'	24'	24'	24'	24'	24'	24'	24'	24'	24'	24'	24'	24'
23' ²³	C5I	23' ²³	C5J	23' ²³	C5K	23' ²³	C5L	23' ²³	C5M	23' ²³	C5N	23' ²³	C5O	23' ²³	C5P
1104 S.F.		1104 S.F.		1104 S.F.		1104 S.F.		1104 S.F.		1104 S.F.		1104 S.F.		1104 S.F.	
24'	24'	24'	24'	24'	24'	24'	24'	24'	24'	24'	24'	24'	24'	24'	24'

DETAILS
SCALE: 1"=30'

BLOCK 290, LOT 1
ABSECON TOWNEHOUSE CONDOMINIUM
AT CALIFORNIA HILL
INSET "A"



SHEET 26

SHEET 20

SHEET 31

"THIS TAX MAP PLATE HAS BEEN DIGITALLY DRAWN USING COMPUTER-AIDED DRAFTING/DESIGN (CAD/D) & COORDINATE GEOMETRY (COCO). IT IS BASED ON THE ORIGINAL DIGITALLY DRAWN TAX MAP PLATE BEARING THE OFFICIAL NEW JERSEY DIVISION TAXATION APPROVAL STAMP WITH APPROVAL DATE 01-09-2009 SERIAL NUMBER 929 AND SIGNATURES OF SIGNERS' THOMAS J. REILLY, CHIEF, LOCAL PROPERTY, FIELD ASSISTANCE, SANTO C. DIDONATO, SUPERVISING FIELD REPRESENTATIVE. THIS TAX MAP PLATE HAS BEEN DIGITALLY UPDATED TO REFLECT CURRENT CONDITIONS. THE ORIGINAL DIGITALLY DRAWN TAX MAP PLATE WITH THE OFFICIAL APPROVAL STAMP IS ON FILE WITH REMINGTON & VERNICK ENGINEERS."



TAXMAP
CITY OF ABSECON

ATLANTIC COUNTY NEW JERSEY
SCALE: 1" = 100' DATE: 11-10-2005

CRAIG F. REMINGTON LAND SURVEYOR LIC. NO. 23924
REMINGTON, VERNICK & WALBERG ENGINEERS
24 GA 28048700
845 N. MAIN STREET, PLEASANTVILLE, N.J. 08232
(609) 645-7100, FAX (609) 645-7076
WEB SITE ADDRESS: WWW.RVVE.COM
TO SHOW CONDITIONS AS OF 12-20-2018