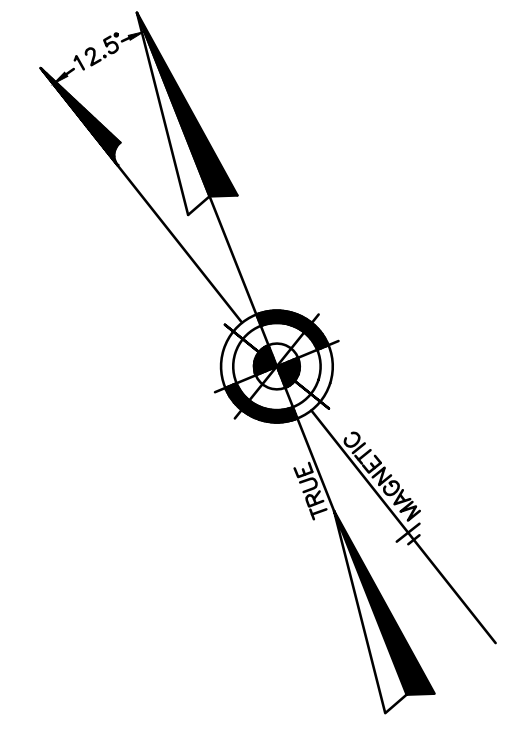
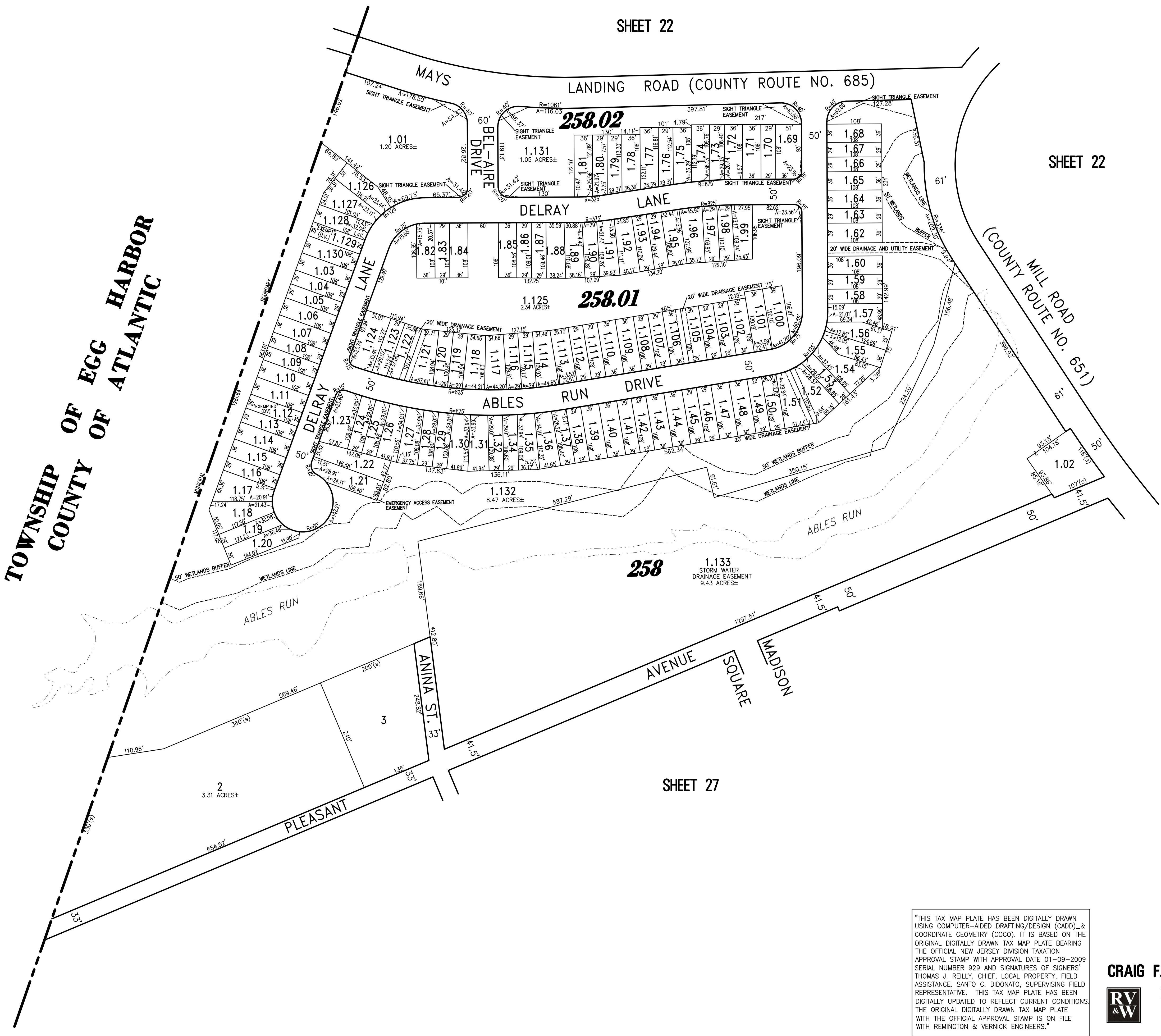


REVISIONS		
7-25-2014	CRAIG F. REMINGTON	23924
12-10-2015	CHARLES E. ADAMSON	42627
12-19-2016	CHARLES E. ADAMSON	42627
4-16-2018	CHARLES E. ADAMSON	42627
12-20-2018	CHARLES E. ADAMSON	42627

**NOTE:**  
 THIS SHEET HAS BEEN REDRAWN USING COMPUTER AIDED DRAFTING/DESIGN (CADD) BASED ON THE MAP PREPARED BY RONALD J. PRICE, N.J. LICENSE NO. 13901, NORTHFIELD, NEW JERSEY.



**TOWNSHIP OF EGG HARBOR**  
**COUNTY OF ATLANTIC**



SHEET 22

SHEET 22

SHEET 23

SHEET 27

THIS TAX MAP PLATE HAS BEEN DIGITALLY DRAWN USING COMPUTER-AIDED DRAFTING/DESIGN (CADD) & COORDINATE GEOMETRY (COGO). IT IS BASED ON THE ORIGINAL DIGITALLY DRAWN TAX MAP PLATE BEARING THE OFFICIAL NEW JERSEY DIVISION TAXATION APPROVAL STAMP WITH APPROVAL DATE 01-09-2009 SERIAL NUMBER 929 AND SIGNATURES OF SIGNERS' THOMAS J. REILLY, CHIEF, LOCAL PROPERTY, FIELD ASSISTANCE, SANTO C. DIDONATO, SUPERVISING FIELD REPRESENTATIVE. THIS TAX MAP PLATE HAS BEEN DIGITALLY UPDATED TO REFLECT CURRENT CONDITIONS. THE ORIGINAL DIGITALLY DRAWN TAX MAP PLATE WITH THE OFFICIAL APPROVAL STAMP IS ON FILE WITH REMINGTON & VERNICK ENGINEERS.

**TAXMAP**  
**CITY OF ABSECON**

ATLANTIC COUNTY NEW JERSEY  
 SCALE: 1" = 100' DATE: 11-10-2005

**CRAIG F. REMINGTON LAND SURVEYOR LIC. NO. 23924**



**REMINGTON, VERNICK & WALBERG ENGINEERS**  
 645 N. MAIN STREET, PLEASANTVILLE, N.J. 08232  
 (609) 645-7100 FAX (609) 645-7076  
 WEB SITE ADDRESS: WWW.RVE.COM

TO SHOW CONDITIONS AS OF 12-20-2018