



GIS Day

November 15, 2017

Rowan College at Burlington County, Mount Laurel Campus

Preliminary Agenda – times & presentations subject to change

Formerly
Burlington County College



Votta Hall, Auditorium

- 8:30 - 9:00 Morning refreshments
- 8:30-12:00 Feature Challenge & Map Contest: *votes collected at 12 & winners announced at 12:45 (Auditorium)*
- 9:00 - 12:00 **Speaker Presentations:**
 - 9:05 - 9:25 **NJ Lands Blueprint Project**
John Hasse, Rowan University
 - 9:30-9:50 **Enhancing Architectural Survey: A Homebrew/Street-view Mashup**
Kinney Clark, NJDEP, Historic Preservation Office
 - 9:55-10:15 **2017 Solar Siting Analysis Update**
Ryan Gergely, NJDEP, Bureau of Energy & Sustainability
 - 10:15-10:40 **Feature Challenge & Break**
 - 10:40-11:10 **Using FEMA Flood Mapping for Decision Support**
Thomas Song, Michael Baker International
 - 11:10-11:35 **TBD**
 - 11:40-12:00 **Monmouth County High Water Mark Initiative & Coastal Flood Evacuation Campaign**
Meghan Leavey, Monmouth County
- 12:00 – 1:00 Lunch **Student Success Center, Room 138**
Breakfast and Lunch are sponsored by

Mobile Geoscience and Remote Sensing Lab

1:00 – 4:30 Learn about satellites and remote sensing in Palmyra Nature Cove's traveling lab

Hands-on GPS Outdoor Field Activity

1:00 – 2:15 **Meet in Technology Building, Room 208**
Learn about GPS and test-drive professional grade GPS units.

Hands-on GIS Lab Exercises

2:30 – 4:30 **Technology Building, Room 208**
Use professional GIS software in these exercises to solve real-life problems.

MAGTUG Symposium: Geospatial Data Management for Local Agencies

- 1:00 – 4:00 **Votta Hall, Auditorium (open to the public)**
 - 1:05-1:40 **File & Folder Naming Procedures, Protocols & Management Tips from the Environmental Impact Analysis of Susquehanna Beltway in Lycoming County, PA**
- Marlen Kokaz-Roy, Weston Solutions
 - 1:45-2:25 **ArcGIS and AutoDesk Integration**
- Justin Cusick & Patrick Gahagan, Esri
 - 2:30-3:10 **CoordinatePA: A Map-based Application for Supporting Utility Project Planning, Collaboration, & Cooperation**
- Bob Pliszka, JMT Technology
 - 3:15-4:00 **Moorestown Township Parks and Open Space Digital Asset Management Inventory**
- Chris Salvatico, Moorestown Environmental Advisory Committee



Brought to you by:
Burlington County Board of Chosen Freeholders
Rowan College at Burlington County
& MAGTUG



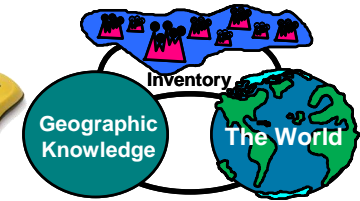
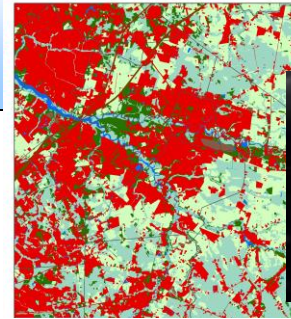
For more information and registration go to: <http://www.co.burlington.nj.us/gisdayatrcbc>



Join Us In Celebrating GIS Day!

Formerly
Burlington County College

GIS Day at
Rowan College at Burlington County,
Wednesday, November 15, 2017



What is GIS?

More than one million people across the globe rely on geographic information system (GIS) technology to solve problems and make better decisions by thinking and planning geographically. GIS combines computer hardware, software, and data to collect, manage, and analyze geographic information. With GIS, users can view relationships, processes, patterns, and trends in the form of maps, globes, reports, and charts. From mapping wildfires to finding the best location for your favorite coffee shop, GIS helps people see how the world works and changes.

What is GIS Day?

Since 1999, more than 10,000 organizations have participated in GIS Day by hosting events such as open houses, hands-on workshops, community expos, career fairs, school-wide assemblies, and mapping projects. GIS Day success is due to the hard work and dedication of GIS users around the world who see the importance of sharing their GIS knowledge with others.

Learn how GIS & GPS are used!

GIS is used by many organizations for mapping, analysis, and decision-making. Join us to find out more about GIS applications such as: **Flood preparedness, solar siting, drone mapping for public safety, inventorying historic architecture, prioritizing land preservation, data management, and supporting government/communities.**

Who Should Attend?

All individuals interested in how geography, through the technology of GIS, affects your everyday life!

Organizations which use GIS are invited to display maps in the Map Gallery. Map submission deadline is November 14th. For more information or to display a map in the Gallery, contact: Merrilee Torres at 609-702-7067 or mtorres@co.burlington.nj.us

Event: GIS Day at Rowan College at Burlington County

Preliminary Agenda

Date:	Wednesday, November 15, 2017, 8:30 am – 4:30 pm
Time:	8:30-9:00 Morning refreshments
	9:00-4:30 Map Gallery
	9:00-12:00 Speakers
	12:00-1:00 Lunch
	1:00-4:30 Palmyra Nature Cove's Mobile Geoscience and Remote Sensing Lab
	1:00–2:15 GPS Outdoor Field Activity
	1:00–4:00 MAGTUG Symposium: Geospatial Data Management for Local Agencies
	2:30–4:30 Hands-on, Self-paced GIS Lab Exercises
Location:	Rowan College at Burlington County 900 College Circle (Mount Laurel Campus) Mount Laurel, NJ 08054

Description

GIS Day will kick off with a morning of speaker presentations highlighting GIS applications across various industries. The afternoon will include a MAGTUG (Mid-Atlantic Geospatial Transportation Users Group, www.magtug.wordpress.com) seminar and hands-on GPS/GIS exercises using professional equipment & software. A Map Gallery will be on display throughout the day. This is also an opportunity to learn about RCBC's Geospatial Technologies program.

Participants can take part in activities where prizes will be awarded.

The event is free and refreshments will be provided. Seating is limited and registration is requested.

For more information and registration go to: <http://www.co.burlington.nj.us/gisdayatrcbc>





November 16-30, 2017

Join the County of Burlington, New Jersey
in Celebrating GIS Day at our **Map Gallery & Contest**

What is GIS?

More than one million people across the globe rely on geographic information system (GIS) technology to solve problems and make better decisions by thinking and planning geographically. GIS combines computer hardware, software, and data to collect, manage, and analyze geographic information. With GIS, users can view relationships, processes, patterns, and trends in the form of maps, globes, reports, and charts. From mapping wildfires to finding the best location for your favorite coffee shop, GIS helps people see how the world works and changes.

What is GIS Day?

Since 1999, more than 10,000 organizations have participated in GIS Day by hosting events such as open houses, hands-on workshops, community expos, career fairs, school-wide assemblies, and mapping projects. GIS Day success is due to the hard work and dedication of GIS users around the world who see the importance of sharing their GIS knowledge with others.

How is GIS used in Burlington County?

At the County of Burlington County GIS is used by many departments for mapping, analysis, and decision making. These include Information Technology, Public Safety, Resource Conservation, Engineering, Prosecutors, Highway and Health. GIS is also used in and around Burlington County by many organizations including police, fire, EMS, planners, engineers, environmental commissions, non-profits, private companies and high school/college students. The specific use of GIS varies based on each organization's needs.

Who Should Attend?

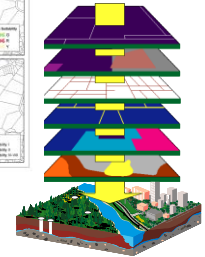
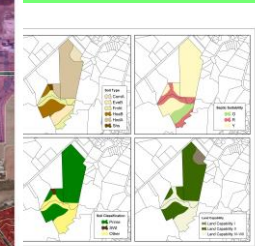
All individuals interested in how geography, through the technology of GIS, affects your everyday life! No registration is required for this event.

For more information or to enter a map, contact:

Merrilee Torres

609-702-7067 or mtorres@co.burlington.nj.us

Deadline to submit a map is the morning of November 16th



Event: GIS Map Gallery & Contest

Date: Thursday, November 16 – Friday, November 30, 2017

Time: 8:00 am – 5:00 pm daily (closed November 23rd & 24th)

Location: 1st Floor

Burlington County Administrative Building

49 Rancocas Road

Mount Holly, NJ 08060



Description

The Map Gallery will display maps produced by various GIS users. Contributors may include Burlington County departments, municipalities, other government agencies, non-profits, and private sector companies. Attendees are invited to vote for their favorite maps in a map contest.

Contest Details

Maps will be voted on in variety of categories including Most Attractive/Artistic, Most Informative, Best Overall, Best Application/Use of GIS, Best New GIS User, and Best First-time Presenter. First and second place winners will receive a certificate and will have their maps displayed on the Burlington County GIS webpage.

Maps may be sent as hard copies or emailed as PDFs or images.

Maps submitted by the morning of November 14th will also be displayed at GIS Day at Rowan College at Burlington County on Wednesday, November 15th.

Previous map contest winners can be viewed at <http://www.co.burlington.nj.us/gisdayatrcbc>